



HERITAGE

seedlings & liners, inc. _____ Unusual Deciduous Species

WHOLESALE CATALOG '23-'24



Acer griseum





For 35 years we've grown Paperbark Maple in wholesale quantities. Fact is, we were not first in the country to offer it, but their rarity tended to lead people to think of seedlings as a delicate item. Heritage radically changed that misconception by growing wholesale quantities reliably.

Acer griseum has exceeded expectations because it tolerates abuse in all but the worst of urban conditions: compacted soil and hot, droughty "hell strips". Yet, with the most basic of care in its first years, it pays handsome returns in the nursery & landscape appeal.

It's modest mature size, under 25 ft., means it seldom needs pruning - either as a street tree, or as a garden specimen. Ornamentally, its unmatched showy bark puts it in a connoisseur class with Japanese Stewartia and the best of conspicuously flowering magnolias, dogwoods and redbuds.

CONTENT

Maple.....	4
Horsechestnut	10
Birch	12
Hornbeam.....	12
Katsuratree	15
Redbud	15
Fringetree	16
Dogwood	17
Smoketree	19
Dove Tree	22
Beech	22
Fothergilla.....	23
Ginkgo	23
Spicebush.....	25
Sweetgum.....	26
Magnolia	27
Mahonia.....	37
Blackgum.....	38
Sourwood	40
Parrotia	40
Oak	40
Stewartia.....	43
Snowbell	45
Perennials	46
Order Form.....	49
Size Guide	50-51
The Fine Print.....	52



OREGONSM
ASSOCIATION OF
NURSERIES

HERITAGE

seedlings & liners, inc

Unusual Deciduous Species



Mark & Jolly Krautmann
4194 - 71st Avenue SE
Salem, OR 97317 USA

phone (503) 585-9835
www.heritageseedlings.com

fax (503) 371-9688
sales@heritageseedlings.com



Jolly has been a solid foundation on which Heritage Seedlings has grown for 42 seasons. While the last 18 months have presented new challenges, she has continued to offer her hallmark dedication to the company, FarWest show, MANTS, and the International Oak Society. She and Mark have continued their travels to Morocco, Spain, Japan, Korea, and most recently France. Who knows where the next adventure awaits?

The staff of Heritage Seedlings would like to take this opportunity to let Jolly know that there are no words to describe how thankful we all are to her and all she has accomplished, and her faithful commitment to us.

With all the love in our hearts,
Thank you Jolly!

All the Heritage staff





HERITAGE

seedlings & liners, inc. _____ Unusual Deciduous Species

Summer 2023

Dear Friends,

Propagation is more than sprouting, grafting and rooting liners. Soil mix, equipment, greenhouses and sales ... all of these come and go. **So, what's for keeps?** Dreams. Propagation is about **staff**. We propagate staff **dreams**.

Nearly every one of our key staff has worked with us for a generation or more. They're the finest we've had in more than 40 years. We're expanding our greenhouse space and hiring new supervisors. We're writing contracts for the best in new genetics for an exciting new line of shrubs. The future at Heritage is not just inspiring **for** our staff; it's inspiring **because of** them.

Speaking of staff, what's on our top leadership agenda?

Jolly and I have been working for years toward a lease/purchase agreement with Octavio Martinez, our capable, inspired nursery manager. Any of you who work with him directly know without doubt: he's got this. With our CPA, our bank and law firm, we're getting professional help. Our nursery leadership is in young, strong, experienced hands, joined with your own. If you need to contact him directly, call our office to discuss any ideas you have with Octavio. He's here for you, just as we are for the next several years of formal transition.

Our fine, amazing Jolly continues to survive and thrive with her contented smile. Although she finds her balance and words with increasing difficulty, her wits are sharp as ever. THANKS for the love letters you send her occasionally and your prayers and support for each of us.

You have always inspired us, and we aim to keep it just that way. **You and we: we're for keeps**. Count on us to be reliable, here for you every season.

God bless and keep each of you.

Mark & Jolly

4194 - 71st Avenue SE
Salem, OR 97317 USA
www.heritageseedlings.com

phone (503) 585-9835
fax (503) 371-9688

Maple

ACER

Acer buergerianum



Trident Maple

Small shade tree with a flaky bark. Colorful autumn leaves. Excellent patio specimen or bonsai subject. It is especially well adapted in the South, growing well even in full sun. A University of Georgia and Pennsylvania Horticultural Society Gold Medal Winner.

	Re-pot into	Zones 5-9
MP	#1	\$1.90 (50)+

Acer campestre

Hedge Maple

One of relatively few native European maple species. It has been used in hedges for centuries, but surprisingly few cultivars exist. It tolerates higher pH than many maples and is a tree with few insect pests or disease threats, adapted across a wide range of US climates.

	Re-pot into	Zones 4-8
3/16"	#1	\$2.35 (50)+
1/4"	#2	\$3.00 (50)+

Acer circinatum



Vine Maple

Pacific Northwest native. Vine Maple heralds the arrival of autumn as its colors light up the landscape. Best grown in clump form, it lends a pleasing accent to larger trees in a border planting and requires almost no care.

	Re-pot into	Zones 5-9
1-2'	#1-2	\$2.35 (50)+
2-3'	#1-2	\$3.00 (50)+
LP21ci	#1-2	\$2.75 (25)+

Acer diabolicum

Devil's Maple

Taller in stature and just as hardy as *Acer campestre*. Although it can be found occasionally in maple collector gardens and large arboreta, propagation difficulty has prevented it's wider distribution. In our observations over the years, it's clean foliage recalls the also-rare Japanese maple *A. miyabei*. Plant these as a trouble-free alternative to the invasive Norway Maple, *Aver platanoides*.

	Re-pot into	Zones 4-8
LP21ci	#2	\$6.90 (25)+

Acer griseum

Paperbark Maple



Among the rich variety of cultivated maples, this one is highly esteemed for its peeling tissue-thin coppery bark. Leaves turn scarlet and orange in fall. Easily grown on to larger size despite its propagation difficulty, and VERY resilient in the landscape.

	Re-pot into	Zones 5-8
LP21ci	#3	\$5.15 (25)+
LP40ci	#3	\$8.90 (10)+
4-5' TR TRUCK ONLY	#5	\$13.15 (5)+
5-6' TR TRUCK ONLY	#7	\$15.35 (5)+

**34 kinds of elegant maples
in a wide variety of sizes to fit your needs**



Acer circinatum



Acer palmatum pre-bonsai (left)
next to MP 3/16" (right)

Acer palmatum Green Japanese Maple

With its delicate foliage, small crown, and naturally artistic form, it creates an Asian effect in any garden. Fall colors are inspiring in their brilliance. Healthy specimen trees seem to always be in short supply. Our pot-grown seedlings have been kept protected from frost to ensure that your rootstocks are free of *Pseudomonas* (black stem) blight.

	Re-pot into	Zones 5-9
SP 1/8" caliper	#1	\$0.95 (50)+
MP 1/8" caliper	#1	\$1.25 (50)+
MP 3/16" caliper	#1	\$1.35 (50)+
4-5' TR	#7	\$12.50 (5)+
5-6' TR TRUCK ONLY	#10	\$14.60 (5)+

Acer palmatum pre-bonsai Pre-bonsai form Green Japanese Maple

Select seedling strain with extremely short internodes, mostly 8-10 inches tall. No graft scar, vigorous, easy to re-establish with moss in bonsai trays as a mini "forest" for quick resale at high profit.

	Re-pot into	Zones 5-9
MP	#1	\$7.05 (50)+
2YR TR	#1	\$15.60 (10)+

Acer palmatum 'Bloodgood' Bloodgood Japanese Maple

This is one of the hardiest and most popular of all the upright cultivars of Red Japanese Maple. Field grown plants have heavier caliper; container-grown plants have less transplant stress. Both gives rapid spring regrowth.

	Re-pot into	Zones 5-9
#1 2-3' WHIP	#5	\$17.00 (5)+
#1 3-4' WHIP	#5	\$19.80 (5)+
2-3' TR WHIP	#5	\$17.00 (10)+
3-4' TR WHIP	#5-7	\$19.80 (10)+

Acer palmatum 'Emperor I' Emperor I Japanese Maple

A fine cultivar distinguished by its bright red foliage. Whereas the more widely available cultivar, 'Bloodgood' has a maroon color, this one is redder, especially when the sun shines through the leaves. Leaves emerge two weeks later than 'Bloodgood'. Milwaukee, WI city arborists consider 'Emperor I' hardy within their urban area.

	Re-pot into	Zones 5-9
#1 2-3' WHIP	#5	\$17.00 (5)+
#1 3-4' WHIP	#5	\$19.80 (5)+
2-3' TR WHIP	#5	\$17.00 (10)+
3-4' TR WHIP	#5-7	\$19.80 (10)+

Acer palmatum 'Fireglow' Fireglow Japanese Maple

One of the less familiar cultivars, 'Fireglow' has red leaves and looks somewhat like 'Bloodgood' but grows slower and denser. It is redder during the summer, becoming purple/red with green before it takes on autumn redder color again.

	Re-pot into	Zones 5-9
#1 2-3' WHIP	#5	\$17.00 (5)+
#1 3-4' WHIP	#5	\$19.80 (5)+

Acer palmatum 'Purple Ghost' Purple Ghost Laceleaf Japanese Maple

Attractive red purple leaves with black veins in spring. The colors are intense and the new leaves almost glow before they age to red in summer, and then intense red and orange in autumn.

	Re-pot into	Zones 5-9
#1 2-3' WHIP	#5	\$17.00 (5)+
#1 3-4' WHIP	#10	\$19.80 (5)+

Acer palmatum 'Sango kaku' Coral Bark Japanese Maple

This small vase shaped tree offers wintertime pink and red bark on young branches. In cool moist climates it can suffer from blight if it is fertilized too heavily.

	Re-pot into	Zones 5-9
#1 2-3' WHIP	#5	\$17.00 (5)+
#1 3-4' WHIP	#7	\$19.80 (5)+

Acer palmatum 'Fireglow'

***Acer palmatum* 'Tsukasa Silhouette'**

Tsukasa Silhouette Japanese Maple

A more recent introduction from Japan, it should become popular for its narrow upright form. Green foliage is smaller as compared to seedlings.

	Re-pot into	Zones 5-9
#1 2-3' WHIP	#5	\$17.00 (5)+
#1 3-4' WHIP	#7	\$19.80 (5)+

***Acer palm.* 'Twombly's Red Sentinel'**

Twombly's Red Sentinel Maple

Unique upright shape, attractive in many situations where space is limited, particularly close to a building or walkway. Plants in our landscape are more appealing with each passing season. It remains a strong maroon color all summer here in NW Oregon.

	Re-pot into	Zones 5-9
#1 2-3' WHIP	#5	\$17.00 (5)+
#1 3-4' WHIP	#7	\$19.80 (5)+

***Acer palmatum* 'Ukigumo'**

Floating Clouds Japanese Maple



In our judgement, the best and most striking of white variegated upright Japanese Maples. A big plus, almost no reversion to green. From a distance the small green, white and pink leaves have an ethereal effect. This conversation item is just perfect to showcase in a shady spot in the garden. This Great Plant Picks selection will eventually reach 16 ft. tall, no surprise there.

	Re-pot into	Zones 5-9
#1 2-3' WHIP	#5	\$17.00 (5)+
#1 3-4' WHIP	#5	\$19.80 (5)+

Acer palmatum* var. *atropurpureum

Red Japanese Maple

One-year plants are perfect for re-potting to grow on for a season; transplants are best for prompt resale. For best branching, lightly pinch the stem tips when they're in tender new growth. An inexpensive alternative to grafted varieties, they are often sold in garden centers in a #1 or #2 pot.

	Re-pot into	Zones 5-8
MP 1-2'	#1	\$2.95 (50)+
1-2' TR	#1	\$6.70 (10)+
2-3' TR	#1	\$9.30 (10)+
3-4' TR	#7	\$11.95 (10)+

Acer palmatum* var. *dissectum

'Crimson Queen'

Crimson Queen Laceleaf Japanese Maple

Among the oldest and most widely recognized of weeping red Japanese maples: has stood the test of time for generations and earned the Royal Horticultural Society's Award of Garden Merit. If you want a red weeper that will always please and many gardeners recognize, this is your variety. Holds its color well into summer and is a consistent profit maker.

	Re-pot into	Zones 5-9
#1 2-3' WHIP	#5	\$17.00 (5)+
#1 3-4' WHIP	#5	\$19.80 (5)+



Acer palmatum* var. *dissectum
'Inaba shidare'

Acer palmatum* var. *dissectum

'Inaba shidare'

Inaba shidare Japanese Maple

Among the best of the weeping red laceleaf maples, known for its leaf color retention in summer, its scorch resistance, vigor, and hardiness. Always popular and attractive.

	Re-pot into	Zones 5-9
#1 2-3' WHIP	#5	\$17.00 (5)+
#1 3-4' WHIP	#5	\$19.80 (5)+

Acer palmatum* var. *dissectum

'Orangeola'

Orangeola Laceleaf Japanese Maple



This beautiful gem is more strongly weeping than most other selections of its kind. It goes through a kaleidoscope of reds, greens, and orange all season long.

	Re-pot into	Zones 5-9
#1 2-3' WHIP	#5	\$17.00 (5)+
#1 3-4' WHIP	#5	\$19.80 (5)+

Acer palmatum* var. *dissectum

'Red Dragon'

Red Dragon Laceleaf Japanese Maple



Unlike most "red" selections this is a more true red. Its color remains vibrant throughout the summer. Smaller than most lace leaf maples, with black bark and a slower growth habit, this maple is a good choice for bonsai or a container.

	Re-pot into	Zones 5-9
#1 2-3' WHIP	#5	\$17.00 (5)+
#1 3-4' WHIP	#7	\$19.80 (5)+

Acer palmatum var. *dissectum*

'Seiryu'

Seiryu Japanese Maple

The only upright laceleaf Japanese Maple, this one is small in stature and has delicate foliage. Light green summertime foliage; in the fall it becomes a beautiful mix of yellow, orange, and red.

	Re-pot into	Zones 5-9
#1 2-3' WHIP	#5	\$17.00 (5)+
#1 3-4' WHIP	#7	\$19.80 (5)+

Acer palmatum var. *dissectum*

'Tamukeyama'

Tamukeyama Japanese Maple

This lace leaf holds its beautiful purple-red foliage throughout the summer and turns scarlet in the fall. It is especially vigorous in hot climates.

	Re-pot into	Zones 5-9
#1 2-3' WHIP	#5	\$17.00 (5)+
#1 3-4' WHIP	#5	\$19.80 (5)+
2-3' TR WHIP	#3	\$17.00 (10)+
3-4' TR WHIP	#7	\$19.80 (10)+

Acer palmatum var. *dissectum*

'Viridis'

Green Laceleaf Maple

This most popular weeping green laceleaf flourishes even in fairly deep shade. Yellow, gold, orange-even some red fall color.

	Re-pot into	Zones 5-9
#1 2-3' WHIP	#5	\$17.00 (5)+
#1 3-4' WHIP	#5	\$19.80 (5)+

Acer pseudoplatanus

Sycamore Maple

Vigorous and easy to grow in the nursery, this gives the plant an aggressive tendency, especially in rocky, dry conditions where other trees fail. Accordingly, these are offered strictly for rootstock use. This maple has the remarkable trait of a "universal donor" as a rootstock for many, but not all maples. We have even grafted *Acer pentaphyllum* onto it with no sign of long term incompatibility.

	Re-pot into	Zones 5-8
3/16"	#1	\$1.95 (50)+
1/4"	#1	\$2.10 (50)+
3/8"	#1	\$2.50 (50)+

Acer pseudoplatanus 'Esk Sunset'

Esk Sunset Sycamore Maple

"Variegated" doesn't begin to describe this extraordinary cultivar of a species that generally lacks ornamental merit. In addition to the leaves being purple beneath, they are a kaleidoscope of astonishing variegation throughout. It doesn't burn in full sun, and is exceptionally drought resistant and cold hardy. Whether placed as an accent against larger, darker trees, or as a specimen up front, it will elicit comments from all who enjoy seeing it for the first time. This goes on your 'buy list'. You'll be back for more.

	Re-pot into	Zones 4-8
LP21ci	#3	\$13.85 (25)+



Acer pseudoplatanus 'Esk Sunset'

Acer pseudosieboldianum

Korean Maple

The outstanding features of this small Asiatic maple are its extreme cold-hardiness and brilliant yellow, red and orange fall color. Not injured by wintertime lows down to -40°F. This is a full 20°F colder than the low temperature limit of other Japanese maples! Here's a fine plant to add some spice to gardens in the upper Midwest. Seed source is northeast China.

	Re-pot into	Zones 3-8
MP	#1	\$2.85 (50)+

Acer pseudosieboldianum

ssp. *takesimensis*

Ullong Korean Maple

From an island in the Sea of Japan, this tree is strongly upright with a central leader. It is not as hardy as seedlings grown from Northern China seed, but is so easy to grow as a nursery plant. This Korean Maple will grow fairly narrowly to 25-40 ft. tall. Good fall color.

	Re-pot into	Zones 6-9
#1 2-3' WHIP	#5	\$17.00 (5)+
#1 3-4' WHIP	#5	\$19.80 (5)+

Cash flow tip

Can you bring your maples in early February. or early March? Shelter them under poly, double-stacked so they root out fast in your new mix. Extend your season, selling many of the larger sizes by Mother's Day.

Acer rubrum

Red Maple

Among the best known of eastern North American trees because it is well adapted. We offer these seedlings as an alternative to more expensive named selections.

	Re-pot into	Zones 3-9
LP21ci	#3	\$2.90 (25)+
1-2' WHIP	#3	\$1.55 (50)+
4-5' TR	#7	\$14.55 (10)+
5-6' TR	#7-10	\$16.25 (5)+

***Acer rubrum* 'Bowhall'**

Bowhall Red Maple

Selected more than 75 years ago, but still among the best of street trees for areas with summer moisture and acidic soil. Its modest growth rate helps to form a tighter-branched, more tidy tree than ubiquitous 'Armstrong'. Not as columnar as the variety, 'Columnare'.

	Re-pot into	Zones 4-8
XP WHIP	#5	\$14.20 (5)+

Acer saccharum

Sugar Maple

Used as a specimen native tree, this is an American classic. Potentially imposing in mature size - to 75 ft. tall. Many cultivars have been selected and these are always popular, handsome trees.

	Re-pot into	Zones 3-8
LP21ci 3/16"	#1	\$2.75 (25)+
LP21ci 1/4"	#1	\$3.10 (25)+

***Acer shirasawanum* Moonrise™ 'Munn 001'**

Moonrise™ Shirasawa Maple

Knockout pink-orange new growth on lime-yellow older growth makes Carl Munn's selection an enduring contribution to horticulture in a field already crowded with too many marginally different Japanese maple varieties. Moonrise is very hardy and a much tougher plant than 'Aureum', withstanding -26°F in Chicago and also adapted if in the shade in Dallas/Fort Worth. The amazing orange spring and summer foliage sets this selection apart as absolutely different. Order early to assure an annual supply.

	Re-pot into	Zones 5-7
#1 2-3' WHIP	#5	\$18.00 (5)+
#1 3-4' WHIP	#5	\$20.80 (5)+

Prices include a \$1.00 royalty

Acer triflorum

Three-flower Maple



Bark peels in tight vertical curls. September brings a muted blend of yellow and claret-red foliage, capturing the essence of autumn. During winter, tufts of snow lodge on the peels of grey and honey-colored bark, lending contrast. Often listed as hardy to Zone 5, some growers report it hardy to -40°F - a full zone hardier than *Acer griseum*.

	Re-pot into	Zones 4-8
LP21ci	#3	\$9.80 (25)+

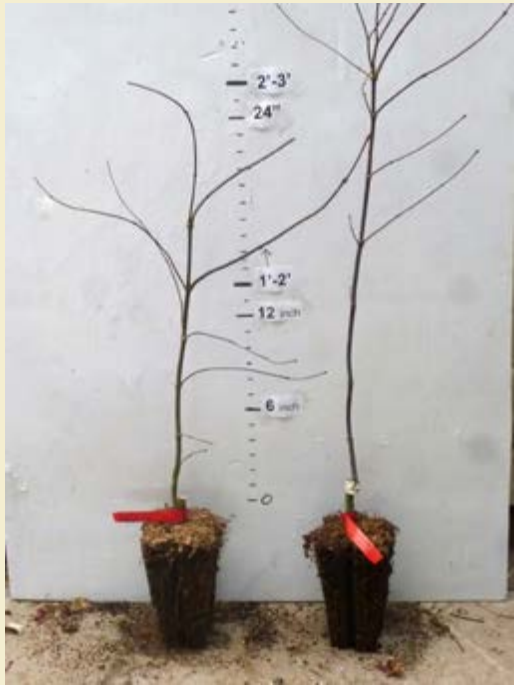


***Acer shirasawanum* Moonrise™ 'Munn 001'**

Size Guide pages 50-51

Maple Size Examples

See also pages 50-51.



XP 1-2' & 2-3'



#1 pot 2-3' & 3-4' whips*

***Plants are removed from pots for shipping.**



#2 pot LT BRCH



Field-grown, bareroot



Acer x Morning Starburst™ 'Morton UW'

Acer truncatum **Shantung Maple**

Resistant to drought and polluted air, this maple is gaining recognition as a promising ornamental. Its growth rate is relatively fast but it doesn't become as large as Norway maple. Its small size, hardiness, appealing Sweetgum-like leaves and brilliant fall color make it a logical candidate for high pH soils or for areas where a tough, yet highly ornamental tree is needed.

	Re-pot into	Zones 5-8
MP	#1	\$2.35 (50)+

Great Plant Picks...

a selection of outstanding plants for the maritime Pacific Northwest.

greatplantpicks.org



Acer x Morning Starburst™ 'Morton UW'

Morning Starburst™ Maple

Vine Maple x Korean Maple hybrid, with the Korean pollen parent giving this elegant maple its exceptional hardiness. Unblemished by the polar vortex event of late January '19 at the Morton Arboretum near Chicago - minus 20° F low temp. and wind chill to minus 40°F. Attractive bronze foliage and hybrid vigor in the nursery and landscape, combined with its modest size and market-extending hardiness qualify this as a "keeper" maple with predictable performance. Be among the first to make it available to your clients.

	Re-pot into	Zones 5-8
#1 2-3' WHIP	#5	\$18.25 (5)+
#1 3-4' WHIP	#5	\$21.05 (5)+
2-3' WHIP	#5	\$18.25 (10)+
3-4' WHIP	#5	\$21.05 (10)+

Prices include a \$1.25 royalty

AESCULUS

Aesculus glabra

Ohio Buckeye

Medium-to-large tree of rounded shape. Attractive foliage is sometimes affected by disease; fall color is variable, from yellow to orange mixed with red. The selection 'Autumn Splendor' offers major advantages by comparison: consistency of fall color, disease resistance, and smaller stature.

	Re-pot into	Zones 3-6
1-2'	#3	\$2.95 (50)+

Aesculus glabra Lavaburst® 'LavaDak'

Lavaburst® Ohio Buckeye

Compact, narrowly upright in form - maturing at under 30 feet by half that in spread. Foliage does not scorch as much as seedling Ohio Buckeyes, lending it bright green summer color followed by bright orange-red in the fall. Selected in North Dakota, it is extremely hardy and tolerant of higher soil pH levels. A unique, useful selection for cold climates where a compact tree with brilliant fall color works best.

	Re-pot into	Zones 3-6
XP	#3	\$17.10 (5)+

Price includes a \$1.50 royalty

Aesculus hippocastanum

Horsechestnut

Dominating mature size limits this tree to large open areas. Often used as a rootstock for *Aesculus x carnea* hybrids, which are smaller and more disease resistant.

	Re-pot into	Zones 3-8
1/4" caliper	#2	\$2.05 (50)+
3/8" caliper	#2	\$2.35 (25)+

Aesculus parviflora

Bottlebrush Buckeye



A large shrub that spreads from root suckers, it is usually no more than 10 ft. tall. Tolerates deep shade and still flowers reliably. Although its suckering habit and small stature might suggest a tender nature, it is remarkably hardy, tolerating winter lows to -31°F. Rarely found in quantity in the wholesale trade, this is a choice American native to reserve for your best customers.

	Re-pot into	Zones 4-8
LP40ci	#3	\$10.05 (10)+



ARBUTUS

Arbutus 'Marina'

Marina Strawberry Tree

Generally, madrone species are difficult to keep alive in the nursery for longer than 5-8 years because they're so susceptible to root rot. But this is a robust hybrid, a truly exceptional nursery plant. Drought tolerant, easily grown and attractive reddish flowers accent its handsome, orange-cinnamon bark. The biggest specimen in the US is 45 x 45 ft., but it is generally of smaller stature, a superb selection for Mediterranean Climate areas of CA and sunny south exposures in the PNW.

	Re-pot into	Zones 7-10
LP40ci	#3	\$12.45 (10)+

ASIMINA

Asimina triloba

Pawpaw

Widely adapted and tolerant of wet soils, our US native Pawpaw has been under-used as a landscape tree but is attracting substantial attention. This genus is the exclusive forage plant for native Zebra Swallowtail butterfly larvae in the East. Nodding purple flowers are unlike those of any other American tree - curious with their three-lobes, pollinated by flies. The perishable fruits have a memorably delicious taste, are nutritious, and resemble the tropical mango. Bold leaves turn a pleasing yellow in autumn. Our seedlings are greenhouse-grown in root-pruning containers for excellent transplant success.

	Re-pot into	Zones 5-8
3/16" caliper	#2	\$4.05 (25)+
1/4" caliper	#2	\$4.75 (25)+

Aesculus ×carnea 'Briotii'

Briotii Red Horsechestnut

A hybrid of *Aesculus hippocastanum* and *Aesculus pavia* with intermediate characteristics. Best used in a broad, open landscape so it doesn't become crowded. Flowers are an attractive pink, splashed with yellow inside. Generally no fruits are produced, a big maintenance plus.

	Re-pot into	Zones 4-8
XP 1-2'	#3	\$15.60 (5)+

Aesculus ×neglecta 'Erythroblastos'

Sunshine Horsechestnut

This plant just screams "spring time is here" with pink new growth. The leaves transition from pink to yellowish and then give way to green and yellow flowers. It's a small tree or even a large shrub so it's a good candidate for smaller gardens.

	Re-pot into	Zones 3-8
XP 1-2'	#3	\$15.95 (5)+

AMELANCHIER

Amelanchier ×grandiflora

Autumn Brilliance®

Autumn Brilliance® Serviceberry

Excellent trade name recognition because it's a clearly superior clone across a wide variety of Midwest and Eastern US climates. Grows to 20-25 ft. and develops reliable red-orange autumn color. The showy multi-colored fruits are relished by birds, and it never becomes obtrusive in the landscape border. What a gem!

	Re-pot into	Zones 3-7
MP	#2	\$4.85 (50)+
LP21ci	#5	\$6.65 (25)+

Prices include a \$0.90 royalty



Amelanchier ×grandiflora
Autumn Brilliance®

Hornbeam



Betula nigra Heritage® 'Cully'

BETULA

Betula nigra Dura-Heat® 'BNMTF' *Dura-Heat*® River Birch

Holds its yellow autumn leaves a full month longer than Heritage®. Has glossier leaves, a tighter habit, and better heat tolerance than Heritage® in Zone 9. You already know Heritage® is a money-making super tree. Try this one for comparison, especially if you're in the Gulf States.

	Re-pot into	Zones 5-9
MP	#3	\$3.95 (50)+
#1 CLUMP	#5	\$15.70 (5)+

Prices include a \$0.36 or \$1.08 royalty

Betula nigra Heritage® 'Cully' *Heritage*® River Birch



Selected by Earl Cully many years ago for its outstanding peeling bark, extreme hardiness, resistance to borers, and ability to grow in waterlogged or dry conditions. Whether you clump them in a container or grow them as singles, this is among the easiest of plants to finish: even our smallest liners can grow to 5-6 ft. in a single season. Named Urban Tree of The Year by the Society of Municipal Arborists.

	Re-pot into	Zones 4-8
MP	#3	\$3.85 (50)+
LP21ci	#4	\$5.70 (10)+
#1 CLUMP	#5	\$14.85 (5)+

Prices include a \$0.25 royalty

Betula utilis 'Edinburgh' *Edinburgh Himalayan birch*

Originally from the Edinburgh Botanic Gardens of *utilis* and *albosinensis* parentage grant this selection hybrid vigor. Glossy green leaves offer dappled sunlight in the summer, and yellow fall color. Upright habit, and white papery bark with rosy tints make this a great tree for planting along busy streets and pedestrian walkways, or as a specimen on its own. Reaches about 20ft tall in 10 years, and 40ft at maturity, and 10ft wide.

	Re-pot into	Zones 5-8
3-4' TR	#10	\$18.90 (10)+

CARPINUS

Carpinus betulus *European Hornbeam*



Most often used as a rootstock for popular cultivars. Seedlings can be effectively used to create a hedge or screen and are favored in Europe for this purpose. Hardy to -38°F in Ohio during the extreme winter of '93-'94.

	Re-pot into	Zones 5-7
LP21ci 3/16" caliper	#2	\$2.75 (25)+
LP21ci 1/4" caliper	#2	\$3.00 (25)+
3/16" caliper	#1	\$2.05 (50)+
1/4" caliper	#1	\$2.45 (50)+
3-4' TR HEDGE*	#10	\$14.55 (10)+
4-5' TR HEDGE*	#10	\$17.20 (5)+

*low-branched for hedges

Plant directly into landscape for max profit.

See *Fagus sylvatica* also.

Our availability lists are emailed and posted on our website beginning mid August. Look for them monthly after mid-November.

***Carpinus betulus* 'Columnaris Nana'** **Dwarf Columnar European Hornbeam**

Given no pruning, forms a dense, dwarf, upright tree. It is useful as a walkway or border focal point or as an edging feature. A diminutive hedge could be another landscape option, with the larger-than-usual buds adding to its winter interest. Rarely available in the trade still, but very easy to grow and zero maintenance required other than irrigation.

	Re-pot into	Zones 5-7
1-2' TR	#3	\$21.20 (5)+
2-3' TR	#5	\$24.30 (10)+

***Carpinus betulus* 'Fastigiata'** **Pyramidal European Hornbeam**



An excellent ornamental because of its clean foliage, generally, upright growth habit, and adaptability. Branches ascend, but its form is not columnar. It has a wide, round base and typically lacks a central leader.

	Re-pot into	Zones 5-7
XP 3-4'	#7	\$18.40 (5)+
4-5' TR TRUCK ONLY	#7	\$27.10 (10)+
5-6' TR TRUCK ONLY	#10	\$29.65 (10)+

***Carpinus betulus* 'Frans Fontaine'** **Frans Fontaine European Hornbeam**



Similar to 'Fastigiata', but with slower growth habit and a more dense foliage. Columnar form grows to 40 ft. at maturity. The attractive leaves turn to gold in the fall, a contrast to the smooth, gray bark.

	Re-pot into	Zones 5-7
XP 3-4'	#7	\$18.40 (5)+
4-5' TR TRUCK ONLY	#7	\$27.10 (10)+
5-6' TR TRUCK ONLY	#10	\$29.65 (10)+

***Carpinus betulus* 'Pinoccheo'** **Pinoccheo European Hornbeam**

Much less congested branch structure than seedlings or the varieties 'Fastigiata' & 'Frans Fontaine'. Observant nurseryman Lanny Rawdon of Arborvillage in Holt, MO reports that it's a robust grower in the Midwest, with a strongly upright form as a young tree. It's distinctly pyramidal in winter branch structure, and clonal propagation assures its predictable landscape uniformity, Lanny tells us it survived -35°F in the harsh winter of 1983. This is a really tough, handsome tree for just about any landscape in Zones 3-8.

	Re-pot into	Zones 3-8
XP 3-4'	#7	\$18.40 (5)+
4-5' TR TRUCK ONLY	#7	\$27.10 (10)+
5-6' TR TRUCK ONLY	#10	\$29.65 (10)+

Carpinus caroliniana **American Hornbeam, Musclewood**



Pest-free and widely adapted to conditions from the stream-side to the neighborhood mall. It's surprising the trade has not more widely embraced this American native. Fall color is an appealing mix of soft red, yellow and orange. Squirrels risk falling from the slenderest of branches to eat every possible fat, fertile seed in October.

	Re-pot into	Zones 4-9
MP	#1	\$2.00 (50)+
LP21ci	#3	\$2.60 (25)+
3-4' TR	#7	\$9.60 (10)+
4-5' TR	#10	\$13.15 (5)+

***Carpinus car.* Fire Belle™ 'JN Select AA'** **Fire Belle™ Musclewood**

Selected by Michael Yanny at Johnson's Nursery in about 2011 for its brilliant-red consistent fall color, moderate growth rate, dense branching and rounded form. The tree was first picked out of a crop of about 1000 seedlings in 2007 as having superior vigor and then later (2011-2014) showing the spectacular, red fall color. It may have the brightest fall color of any *Carpinus caroliniana*. This is useful as a specimen plant either in full sun or the shade and tolerates heavy soils well. It should not be used in droughty soils and develops its best fall colors in full sun. The original plant was measured in October of 2016 at 13' tall by 13' wide, age 15.

	Re-pot into	Zones 3-7
XP 2-3'	#5	\$19.55 (5)+
XP 3-4'	#5	\$22.40 (5)+

Prices include a \$1.50 royalty

***Carpinus caroliniana* Wisconsin Red™** **Wisconsin Red™ Musclewood Seedlings**

Amazing fall color, so much so in fact, if you didn't know better you would suspect it was a different species. Raging reds, oranges and yellow autumn tones set this strain apart from ordinary seedlings.

	Re-pot into	Zones 3-7
LP21ci 1-2'	#3	\$3.70 (25)+
4-5' TR	#10	\$14.75 (5)+
5-6' TR	#10	\$16.85 (5)+

Prices include a \$0.20 royalty



Carpinus betulus

Carpinus coreana **Korean Hornbeam**

Rare in the wholesale nursery trade, this species also merits wider use as a small specimen tree. It develops a strong drought-resistant root system, remains small, and has excellent ornamental character. The best bonsai choice among hornbeams because of its tiny leaves and shrubby, short irregular stems.

MP	Re-pot into	Zones 5-8
	#1	\$2.95 (50)+

***Carpinus coreana* Model Rocket™** **Model Rocket™ Korean Hornbeam**

We've always had a fascination with the distinctive strong variation in seedlings of this species, and this is the best of many columnar forms we've observed over the past 20 years. Perfect as a street tree because of its narrow growth habit (5' x 20' after a dozen years), its strongly mycorrhizal roots give it exceptional drought tolerance and its tiny leaves mean it never makes a cleanup mess after leaf drop. Branches are tough, they don't break under an ice load like faster-growing, weaker red maples or birches. Fall color favors yellow sprinkled with a bit of orange, and gives way to a pleasing outline of narrow-angle ascending branches. Included bark in the branch crotches seems to never be a problem. A Heritage original, new to the trade this season.

XP 2-3'	Re-pot into	Zones 5-8
	#5-7	\$17.75 (5)+
XP 3-4'	#7	\$19.85 (5)+

***Carpinus* x *Skylark*®** **Skylark® Hornbeam**

Combines the hardiness of *Carpinus caroliniana* with the upright habit of *Carpinus betulus* 'Fastigiata'. Pest free, its remarkable adaptive character is enhanced by hybrid vigor and strong mycorrhizal roots that allow it to thrive even in droughty conditions. Treat them with routine nursery care and watch them make you money.

XP 3-4'	Re-pot into	Zones 5-8
	#7	\$19.60 (5)+
	#10	\$28.30 (5)+
4-5' TR	#10	\$30.85 (5)+

Prices include a \$1.20 royalty

We remove pot and plug material from their containers to save you freight and avoid plant damage.
See photos p. 20.

CELTIS ***Celtis occidentalis*** **Common Hackberry**

Hackberry has an extensive natural range in the Eastern US indicating it's tough, drought and cold-tolerant nature. Leaves are coarse and grey/green in the summer, and become yellowish in the fall. The small yellow to purple fruit is edible but usually eaten by wildlife. Grows from 40-60+ ft. tall, almost as wide.

2-3'	Re-pot into	Zones 3-9
	#1-2	\$2.70 (50)+
	#1-2	\$3.40 (50)+
	#1-2	\$13.00 (5)+
3-4'	#1-2	\$15.50 (5)+
4-5' TR	#1-2	
5-6' TR TRUCK ONLY	#1-2	



**New growth on a
Katsuratree bud**



Cercidiphyllum japonicum
Claim Jumper™^{HS11}

CERCIDIPHYLLUM

Cercidiphyllum jap. Claim Jumper™^{HS11} Claim Jumper™ Golden Katsuratree

A Distinctive Heritage Seedlings introduction, this katsuratree has golden summer foliage. The leaves emerge with a pink blush and unfurl to soft yellow. Throughout summer the more shaded leaves turn green, while those in sun remain yellow or turn almost white. autumn yields the characteristic sweet fragrance and buttery golden color of the species. Best for a site with some late afternoon sun protection, but it has proved remarkably resistant to sunburn in Tennessee.

	Re-pot into	Zones 5-8
#1 3-4'	#10	\$20.95 (5)+
#1 4-5'	#10	\$23.05 (5)+

Cercidiphyllum japonicum 'Rotfuchs' Red Fox Katsuratree

Often times listed as 'Red Fox', this reddish-leaved form is more slow growing than most - dense and upright.

	Re-pot into	Zones 5-8
#1 2-3'	#5	\$18.45 (5)+
#1 3-4'	#5	\$20.95 (5)+

CERCIS

Cercis canadensis

Eastern Redbud

Widely adapted and often associated with *Cornus florida* in its native range. Bright pink flowers appear in the first warm days of spring; a delight after a long winter. Grow them on for a fast finish in fall, or graft/bud any of the fine cultivars.

	Re-pot into	Zones 5-9
MP 3/16" caliper	#1	\$2.25 (50)+
1/8" caliper	#1	\$1.50 (50)+
3/16" caliper	#1	\$1.90 (50)+
3-4' TR	#3	\$10.75 (10)+
4-5' TR TRUCK PREF	#3	\$12.90 (5)+
5-6' TR TRUCK ONLY	#3	\$15.65 (5)+

Cercis canadensis Black Pearl™ 'JN16' Black Pearl™ Redbud

This is another Ray Jackson section for very dark purple foliage which, in the right light, appears black even in our cool Oregon climate. It is going to bring a lot of excitement to this market and will create great value for the garden center trade. Lavender flowers. Supply is very limited.

	Re-pot into	Zones 5-9
#1 2-3'	#5	\$18.85 (5)+

Price includes a \$1.50 royalty

Cercis canadensis 'Forest Pansy' Forest Pansy Redbud

Popular variety with maroon-colored leaves. Flower color same as the species. Leaf color is darkest when planted in full sun.

	Re-pot into	Zones 5-9
#1 2-3'	#5	\$15.70 (5)+
#1 3-4'	#7	\$17.00 (5)+

Cercis can. 'Hearts of Gold' Hearts of Gold Redbud

Hearts of Gold is the first of several new yellow-leaved redbuds. Its neon-yellow foliage is an immediate contrast in any landscape. Upright growth like the species; no leaf scorch in summer.

	Re-pot into	Zones 5-9
#1 2-3'	#5	\$17.35 (5)+
#1 3-4'	#7	\$18.65 (5)+

Prices include a \$1.65 royalty

Cercis can. Lavender Twist® 'Covey' Lavender Twist® Weeping Redbud

Selected by Ohio tree connoisseur Tim Brotzman. Strongly weeping tree with masses of lavender-pink, pea-shaped flowers in late spring. Dark green, glossy summer foliage.

	Re-pot into	Zones 5-9
#1 2-3'	#5	\$16.70 (5)+
#1 3-4'	#7	\$18.00 (5)+

Prices include a \$1.00 royalty

Cercis canadensis 'Ruby Falls'

Ruby Falls Redbud

Result of a 'Forest Pansy' x 'Covey' cross, this is a hardy, compact genetic "combo" of purple foliage in a redbud weeper. If you don't mind staking it until it gets to 8 ft. or more, it will reward your efforts with small stature and clearly unique character to make your clients proud.

	Re-pot into	Zones 5-9
#1 2-3'	#5	\$18.45 (5)+
#1 3-4'	#7	\$19.70 (5)+

Prices include a \$3.00 royalty

Cercis canadensis The Rising Sun™ 'JN2'

The Rising Sun™ Golden Redbud

Introduced by Ray and Cindy Jackson. New growth has a light, Pumpkin-orange tint that distinguishes it from the uniformly green-ish-yellow color of 'Hearts of Gold'. In the heat of the Midwest and SE, it doesn't burn; that just makes it grow faster. We think you'll be amazed at its incandescent attractiveness, whether in a wholesale nursery or potted up for direct sale in a GC.

	Re-pot into	Zones 5-9
#1 2-3'	#5	\$17.70 (5)+
#1 3-4'	#7	\$19.00 (5)+

Prices include a \$2.00 royalty

CHIONANTHUS

Chionanthus retusus

Chinese Fringetree

Like *Chionanthus virginicus*, Chinese Fringetree is an easily grown, small to medium tree. Flowers are borne at the ends of new shoots, weighing down the branches like wet snow. Few pests bother it. Always appealing across the seasons, the cinnamon-colored bark is most attractive in winter when contrasted against a snowy background.

	Re-pot into	Zones 6-8
6-12"	#1	\$3.25 (50)+

Chionanthus virginicus

White Fringetree



Shiny dark green leaves and abundant white, pleasantly fragrant flowers showcase this classy American native. Much hardier than *Chionanthus retusus*, it performs best in full sun and is remarkably versatile - from moist lowlands to dry hillsides. Among the finest of ALL landscape plants, not just natives.

	Re-pot into	Zones 4-9
6-12"	#1	\$3.10 (50)+
1-2'	#3	\$4.15 (50)+
1-2' TR	#3	\$7.45 (10)+

CLADRASTIS

Cladrastis kentukea

American Yellowwood



Still uncommon in cultivation, this is an exceptional ornamental tree. Like wisterias, it is most noted for its large showy drooping clusters of fragrant white flowers, touched with yellow in the center. Introduced into cultivation by André Michaux in 1796. Its roots were chipped and boiled to yield a yellow dye for homespun fabrics before synthetic dyes became available. Adapted across a wide range of soil pH, it prefers a reasonably moist, yet well-drained soil with full sun and space to grow.

	Re-pot into	Zones 4-8
LP21ci	#2	\$3.50 (25)+

COMPTONIA

Comptonia peregrina

Sweet Fern

With attractive lacy foliage that is very sweetly scented this makes an attractive, colonizing, small shrub that should be planted where it can be seen closely and easily touched to release its fragrance into the air. It has a long history of medicinal uses but is seen less frequently than deserved outside the North East. Hardy almost beyond belief!

	Re-pot into	Zones 2-8
LP21ci	#2	\$5.90 (25)+



Chionanthus virginicus

Dogwood

CORNUS

Cornus alternifolia

Pagoda Dogwood

Shrubby tree with a prominently horizontal, tiered branch pattern, suggesting its common name. Flat clusters of fragrant May flowers add to its layered ornamental appearance. Blue-black fruits ripen in late summer, followed by bronze autumn foliage.

MP	Re-pot into	Zones 3-7
	#1	\$2.40 (50)+

Cornus × 'Eddie's White Wonder'

Eddie's White Wonder Dogwood

Large flowers, exceptionally fast hybrid growth, and tree-like form make this cultivar an attractive, under-used plant for the Pacific Northwest. *Cornus florida* × *nuttallii*

#1 3-4'	Re-pot into	Zones 7-9
	#7	\$18.85 (5)+

Cornus × 'Rosy Teacups'® 'F70:R11,P13' PP 26,211

Rosy Teacups® Dogwood

Very fine hybrid from Rutgers, this *Cornus kousa* × *nuttallii* hybrid has stunning pink-red blossoms. One of the top red dogwood on the market. A well branched and freely-flowering tree, it is disease resistant, hardy, and has great red fall color.

2-3'	Re-pot into	Zones 5-8
	#5	\$18.60 (10)+

Price includes a \$1.75 royalty

Cornus × 'Venus'® 'KN 30-8' PP 16,309'

Venus® Dogwood

Huge white flowers, foliage resistant to the leaf diseases that plague seedling flowering dogwoods. Here in Oregon, our stock plants flower for a month starting in early to mid-May. Its exceptional vigor can result in too-leggy growth, even with routine fertilizer use, so manage nitrogen application conservatively.

#1 3-4'	Re-pot into	Zones 6-8
	#7	\$20.35 (5)+
#1 4-5'	#10	\$23.25 (5)+

Prices include a \$1.50 royalty.

↑
"Re-pot into"
What does it mean?

To help you consider your liner investment and profit opportunity, we recommend container options for you to pot up each size.



Cornus elliptica

Empress of China® 'ELSBRY'

Empress of China® Evergreen Dogwood

An evergreen Chinese Dogwood with a graceful, yet vigorous habit and loads of flowers. Each branch holds dozens of white blooms that eventually transform into translucent strawberry-like fruit. Empress of China will light up your partly-shaded garden year-round color and excitement. It relishes heat.

LP40ci	Re-pot into	Zones 6-9
	#3	\$16.30 (10)+

Price includes a \$1.50 royalty

Cornus florida

Flowering Dogwood

Beautiful small American native with tiered branching. Wonderful floral display of white flowers and great fall color. Despite the enormous number of named selections out there, when one sees seedling specimens in the East in cemeteries or parks, there are always plenty of these that elicit, "Someone ought to name that one."

MP	Re-pot into	Zones 5-9	
	#1	\$1.95 (50)+	
	LP21ci 3/16" caliper	#2	\$2.30 (25)+
	LP21ci 1/4" caliper	#2	\$2.75 (25)+
	#1 2-3' WHIP	#2	\$6.70 (5)+
#1 3-4' WHIP	#2	\$8.30 (5)+	



Cornus kousa 'Summer Fun'

Cornus florida 'Cherokee Brave' Cherokee Brave Dogwood

Late-flowering form, essentially disease free. Deep pink to red flowers on this dogwood that makes most growers' top ten list.

2-3' WHIP Re-pot into #5 **Zones 5-9**
\$16.85 (10)+

Cornus kousa 'Greensleeves' Greensleeves Dogwood



Cappiello and Shadow, in their book, Dogwoods, call it one of the very best Cornus kousa varieties. Our own experience and that of growers across a broad range confirms their evaluation. Strong growth makes it a great nursery plant, and its handsome foliage and abundant flowers give it universal appeal. Flowers suffused with a hint of green on cream. Heavy fruit set against deep green waxy foliage that turns to autumn shades of red and purple.

2-3' WHIP Re-pot into #5 **Zones 5-8**
\$16.85 (10)+

Cornus kousa 'Satomi' Satomi Dogwood



Best known of the pink *Cornus kousa* selections. Flowers are a rich variety of muted pinks over a period of almost a month! Leaves also tinted with a bit of maroon, adding summer-long interest. Income potential matches its ornamental promise, as its growth is upright and strong. It is not patented, and almost never develops the disease problems associated with *Cornus florida*. Flowers brightest pink in full sun.

2-3' WHIP Re-pot into #5 **Zones 5-8**
\$16.85 (10)+

Cornus kousa Scarlet Fire™ 'Rutpink' PP28,311 Scarlet Fire™ Dogwood



This is the first kousa dogwood released from the fabled Rutgers breeding program. It was selected for its deep pink to fuchsia colored bracts. They almost glow from a distance. The bracts are pointed and do not overlap, developing an attractive starry shape.

2-3' WHIP Re-pot into #5 **Zones 5-8**
\$19.20 (10)+
Price includes a \$2.35 royalty

Cornus kousa Snow Tower® Snow Tower® Dogwood

It has all the features you've come to expect from Chinese dogwood: excellent white flowers followed by showy fruit, great fall color of orange red. This variety has a much narrower habit - to only 8 ft. wide in twenty five years. Snow Tower® could easily be utilized as a street tree.

2-3' WHIP Re-pot into #5 **Zones 5-8**
\$17.70 (10)+
Price includes a \$0.85 royalty.

Cornus kousa 'Summer Fun' Summer Fun Dogwood

Introduced by Talon Buchholz, this brilliant, white-margin variegated clone seems perfectly sun tolerant and puts on a show to rival any of the daunting number of other white-variegated kousas. It is the most vigorous variegated clone we have grown.

2-3' WHIP Re-pot into #5 **Zones 5-8**
\$16.85 (10)+
3-4' WHIP #7 **\$18.85 (10)+**

The Gold Medal Plant Award of the Pennsylvania Horticultural Society

recognizes trees, shrubs and woody vines of outstanding merit for their superb eye-appeal, performance, and hardiness in Zones 5-7.

**What an amazing collection of fine
dogwoods: 16 to choose from!**



Filling baskets for planting

***Cornus kousa* 'Summer Gold'** PP 22,765

Summer Gold Dogwood

Crispin Silva of Crispin's Creations, Molalla, OR has a sharp eye for plants of superior ornamental merit. We recognized his selection had an auspicious future so we were the first to offer it in the wholesale trade. Distinctly upright in form, as opposed to the other gold-variegated dogwood, 'Gold Star'. Its uniform yellow variegation, unwrinkled leaves and strong growing habit qualify it a money-maker.

	Re-pot into	Zones 5-8
1-2' WHIP	#5	\$16.55 (10)+
2-3' WHIP	#5	\$18.50 (10)+

Prices include a \$1.65 royalty

Cornus kousa* var. *chinensis

Chinese Dogwood

Mostly free of anthracnose leaf disease, and always popular in the nursery trade because seedlings are inexpensive and easy to grow in a pot. Spectacular when laden with masses of large-bracted flowers. Vase-shaped at maturity, it differs significantly from *Cornus florida* by blooming a full month later and has more attractive, strawberry-like fruits. autumn color is a showy burgundy, and fruits ripen at different stages in colors of green, yellow, orange, and red. Differs from *Cornus kousa*, Japanese Dogwood, in its more upright growth, longer internodes, and larger leaves and flowers. These characteristics make it profitable as an ornamental garden center promo item, and as a dependable rootstock.

	Re-pot into	Zones 5-8
MP 3/16" caliper	#1	\$1.70 (50)+

Cornus mas

Corneliancherry Dogwood

Very hardy. Prized for its ornamental bark and fruit, small stature, and disease-free character. March flowers provide a splash of yellow to herald the first days of spring. Variability in form and flower; however, this motivates a trend toward using seedlings as rootstock for named varieties that are selected for abundant flowers and large fruit.

	Re-pot into	Zones 4-8
MP	#1	\$2.25 (50)+

Cornus sericea

Redtwig Dogwood

Tolerates wet or dry conditions. Occasional pruning promotes best winter stem color. Exceptionally tough shrubs grown for their bright winter stems.

	Re-pot into	Zones 3-7
1-2' CONSERVATION	#1	\$1.30 (50)+

COTINUS

***Cotinus coggygia* Golden Spirit®**

'Ancot' PP 13,082



Golden Spirit® Smoketree

Unusual for its yellow to lime-green summer foliage, and tufts of soft, smoky gray flowers. A small but vigorous tree, it grows best in full sun and closes out the summer with fall colors of pink, red, and orange.

	Re-pot into	Zones 5-8
LP40ci	#5	\$10.05 (10)+
2 YR TR	#7	\$12.90 (10)+

Prices include a \$0.65 royalty

Cotinus coggygia* var. *purpurea

'Royal Purple'

Royal Purple Smoketree



Best known of several varieties, always popular and perfectly uniform genetics as compared to less expensive seed-propagated liners. Buy these for more discriminating clients; buy seedlings for a promo, for a price-conscious customer.

	Re-pot into	Zones 5-8
LP40ci	#3	\$7.20 (10)+
2 YR TR	#3	\$14.60 (10)+

See specifics on our container cell volumes, page 50.

Examples of what you'll get when your plants arrive.



Our harvest and grading starts just ahead of shipping. That way we are able to quickly get you fresh liners delivered quickly.



Rootstock plants like these *Magnolia kobus* plugs are graded by caliper. We top most rootstocks before harvest to reduce shipping costs.

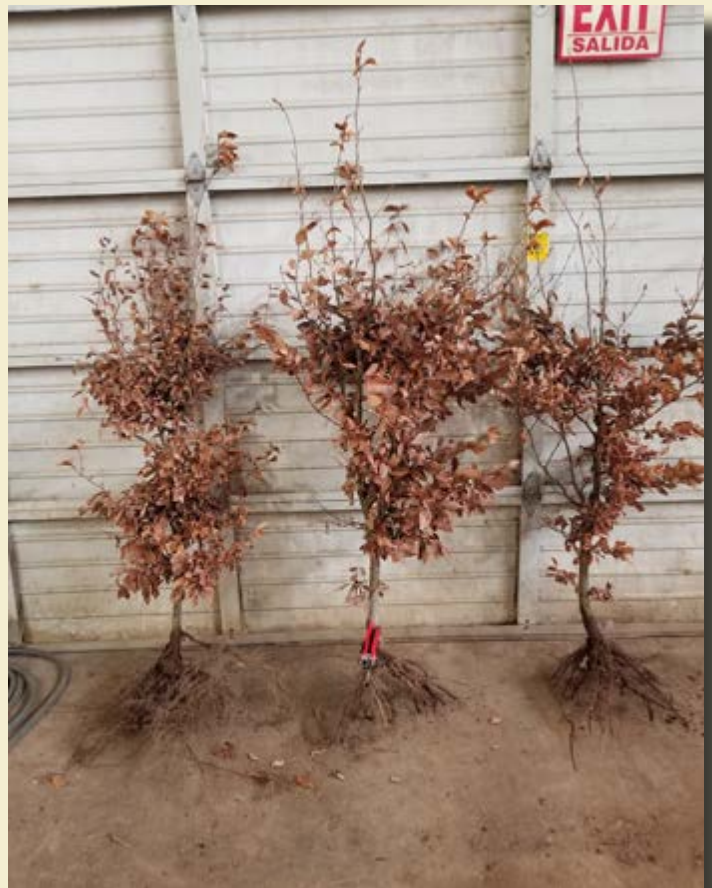


Grafted trees like these 'Inaba shidare' maples are graded by height with the rootballs netted for fast, easy handling & to minimize soil mix loss during handling and transit.

We prune plants throughout the growing season to promote their best growth and form. Contact us about a growing agreement if you have special needs.



Naturally shrubby items, like hydrangea, may be pruned back to promote bushier growth. They'll cover your container faster.



Hedge grade *Fagus* or *Carpinus betulus* are topped in the field to promote lower branching. These will form hedges quickly, allowing faster turns times.

Cotinus coggygria* var. *purpurea **Purple Smoketree (select seedlings)**

Deep purple leaves which hold color throughout the summer. Economical alternative to more expensive cultivars, these can be potted up for a popular, easy to grow promo item in the garden center. The few greenish plants which emerge in our seedlings are pulled out early, so you're assured of receiving plants with uniform, dark purple leaves.

	Re-pot into	Zones 5-8
MP	#1	\$1.95 (50)+

Cotinus obovatus **American Smoketree**

Stunning autumn color. Its flaming fall foliage rivals that of Sugar Maple. Thrives in rocky, dry areas where other trees languish. Larger leaves than *Cotinus coggygria* and much taller in stature at maturity.

	Re-pot into	Zones 4-8
MP	#1	\$2.80 (50)+

DAVIDIA ***Davidia involucrata*** **Dove Tree**

The intriguing flowers of this Chinese native tree invite closer inspection. Similar to Flowering Dogwood and Chinese Dogwood, the "petals" are actually large white bracts that overshadow the inconspicuous actual flowers. Difficult to propagate and locate in the wholesale trade, Dove Tree is widely adapted and fast-growing to 40 ft. tall. Once established, it makes an strong specimen tree, seldom damaged by ice storms.

	Re-pot into	Zones 6-8
LP40ci	#5	\$11.10 (10)+
#1	#5	\$16.90 (5)+

DIOSPYROS ***Diospyros virginiana*** **American Persimmon**

Native widely distributed in the East. Heat tolerant, tough and having more ornamental character to recommend it than is widely acknowledged. The astringent fruits are most attractive, accented on top with large, persistent calyces. Fruit can be abundant, but isn't usually messy because it persists late into winter, providing a tasty treat for wildlife after the first hard frosts. The deeply furrowed, blocky bark on mature trees is especially handsome when accented by winter snow. Its unobtrusive size and ease of care make this a tree that deserves more attention by designers and landscape firms, and our propagation numbers reflect big recent up-tick in demand.

	Re-pot into	Zones 4-9
1/8" caliper	#1	\$1.35 (50)+
3/16" caliper	#1	\$1.45 (50)+

Shipping restrictions apply

FAGUS ***Fagus grandifolia*** **American Beech**

Heat tolerance helps this native tree outperform *F. sylvatica* in the Southeast, and yet it is also cold hardy. Best for large, open area where it is free to grow, reaching heights of 70-90 ft.

	Re-pot into	Zones 3-9
3-4' 1YR TR	#5	\$15.15 (5)+
4-5' TR	#10	\$17.20 (5)+

Fagus sylvatica **European Beech**

The grand patriarch of specimen trees. Generations of horticulturists have selected a rich assortment of beautiful cultivars that are grafted onto rootstocks such as these.

	Re-pot into	Zones 5-8
LP21ci 3/16" caliper	#1	\$2.90 (25)+
LP21ci 1/4" caliper	#1-2	\$3.20 (25)+
3-4' TR HEDGE* TRK PRF	#10	\$12.70 (10)+
4-5' TR HEDGE* TRK ONL	#10	\$15.60 (5)+
5-6' TR HEDGE* TRK ONL	#10	\$19.35 (5)+

*low branched for hedges

Plant directly into landscape for max profit.

See *Carpinus betulus* also.

***Fagus sylvatica* 'Dawyck Gold'** **Dawyck Golden European Beech**

Tightly upright without pruning. Its moderate growth rate makes it a useful landscape plant. Bright golden spring foliage fades to green, followed by pleasing bronze fall color. Selected in Scotland as a seedling cross of the green 'Dawyck' Columnar Beech and the golden variegated selection 'Zlatia'.

	Re-pot into	Zones 5-8
XP 2-3'	#3-5	\$16.75 (5)+



Cotinus obovatus

Beech

Fagus sylvatica 'Dawyck Green'

Dawyck Green European Beech

Narrowly columnar form, its tight habit in notable contrast to green seedlings that grow to round form as wide or wider than tall. Not a dwarf, it can reach 50+ feet tall.

XP 2-3'

Re-pot into
#3-5

Zones 5-8
\$16.75 (5)+



Fagus sylvatica 'Dawyck Purple'

Dawyck Purple European Beech

A favorite purple beech that holds a beautiful narrow, upright form. Selected in Scotland as a chance seedling cross of the green 'Dawyck' Columnar Beech and a purple-leaf form, it has become a mainstay in the landscape trade for its consistent dark purple foliage and appealing upright habit.

2-3'

Re-pot into
#7

Zones 5-8
\$16.75 (10)+



Fagus sylvatica 'Red Obelisk'

Red Obelisk European Beech

Combines the merits of dark purple foliage in 'Dawyck Purple' and 'Rohan Obelisk', with its crinkled edge foliage.

XP 2-3

Re-pot into
#3-5

Zones 5-8
\$16.75 (5)+

Fagus sylvatica 'Riversii'

Riversii Purple European Beech

Deep purple, shiny leaves, upright when young, spreading to form a 60 ft. globe at maturity. Long in cultivation: cemeteries in many Eastern US cities were often planted with this variety, or other purple beeches that have grown into enormous specimens. Fast-growing in the nursery, they also make great field plants to bump later into a #15-20 container.

XP 2-3'

Re-pot into
#3-5

Zones 5-8
\$16.75 (5)+



Fagus sylvatica 'Roseomarginata'

Tricolor European Beech

Variegated leaves in shades of green, pink, and white that turn to a copper color in fall, making this an unforgettable tree. Exceptionally popular item in a daunting list of cultivars.

XP 2-3'

Re-pot into
#3-5

Zones 5-8
\$16.75 (5)+

FOTHERGILLA

Fothergilla × *intermedia* 'Mt. Airy'

Mt. Airy Fothergilla

A select American native, 'Mt. Airy' merits wider use as compared to its close relatives, the witchhazels, which are much larger in mature stature. Exhibits excellent hardiness, attractive summer foliage and spectacular autumn color. The white bottlebrush flowers are born in showy abundance during April/May.

LP40ci

Re-pot into
#3

Zones 5-8
\$8.60 (10)+



GINKGO

Ginkgo biloba

Ginkgo

Witness to the birth and extinction of countless species over a period of 250 million years, Ginkgo survives to charm us with its unique fan-shaped leaves and butter-yellow fall color. Consider that even after Hiroshima, at ground zero it was the lone surviving tree species the following spring. Merits wider use: many new grafted male cultivars are becoming very popular. These are un-sexed seedlings, used almost exclusively for grafting.

3/16" caliper
1/4" caliper

Re-pot into
#1
#1

Zones 4-8
\$1.90 (50)+
\$2.10 (50)+



***Ginkgo biloba* 'Autumn Gold'**

Autumn Gold Ginkgo

Among the most popular of the fruitless male selections. Not as strongly upright as the variety 'Fastigiata', Liners require staking early. With age it attains a handsome form and consistent brilliant gold color in autumn. This clone and 'Saratoga' come from the Saratoga Horticultural Foundation.

	Re-pot into	Zones 4-8
#1 2-3'	#3	\$20.25 (5)+
#1 3-4'	#5	\$22.25 (5)+

***Ginkgo biloba* Goldspire 'Blagon'**

Goldspire Ginkgo

Goldspire Ginkgo grows slowly but is dense and upright, less than ¼ as wide as tall. A male selection from Europe, it has golden foliage in autumn.

	Re-pot into	Zones 4-8
#1 2-3'	#3	\$20.25 (5)+
#1 3-4'	#5	\$22.25 (5)+

***Ginkgo biloba* 'Mariken'**

Mariken Ginkgo

It is a masterpiece, prized for its compact stature and dense foliage, this hardy dwarf tree enjoys full sun and grows with minimal attention. 'Mariken' is an excellent choice for conifer gardens, small spaces, containers, and fairy gardens. Grows 3-4 ft tall x 5-8 ft wide over a 10-year span. Very popular!

	Re-pot into	Zones 4-8
#1 1-2' LOW GRAFT	#3	\$18.40 (5)+
#1 2-3' LOW GRAFT	#3	\$20.25 (5)+

***Ginkgo biloba* Princeton Sentry®**

Princeton Sentry® Ginkgo

This male variety grows to 60 ft. tall but only half as wide. With its strong central leader, its form is more pyramidal than truly columnar.

	Re-pot into	Zones 4-8
#1 2-3'	#3	\$20.85 (5)+
#1 3-4'	#5	\$22.85 (5)+

Prices include a \$0.60 royalty

GORDLINIA

× *Gordlinia grandiflora*

Mountain Gordlinia

An exciting but seemingly unlikely combination this inter-generic hybrid from Thomas Ranney at NCSU combines the hardiness of Franklinia with the cultural ease of Gordonia. Early white 2 in. flowers, semi-evergreen foliage, and a robust tree-like growth habit make this an exciting new flowering tree addition to the trade. Growing quickly and branching sparsely, nursery training is important to get the best looking small trees in your nursery or Garden Center.

	Re-pot into	Zones 7-10
LP40ci	#1	\$9.85 (10)+

Size Guide pages 50-51



***Ginkgo biloba* Goldspire 'Blagon'**

HALESIA

Halesia tetraptera

Carolina Silverbell

Vigorous, 60-80 ft. tree having abundant bell-shaped flowers on previous year's wood. Flower clusters create an endearing effect, especially when viewed from below or through filtered sunlight.

LP21ci Re-pot into #2 Zones 4-8 \$3.05 (25)+

LINDERA

Lindera angustifolia

Oriental Spicebush

A delightful species in this genus of nearly more than 80 world-wide, only 3 of which are available in the USA. This one is Asian, having golden and orange-red fall color and refined, narrow foliage. Hardy, it's seldom seen in the trade, and merits much wider use.

2 YR TR Re-pot into #5 Zones 5-8 \$16.05 (10)+



Heptacodium miconioides

HEPTACODIUM

Heptacodium miconioides

Seven-Son Flower



Due to its multi-season appeal, this multi-stemmed tree introduced from China in 1980 is finally starting to gain followers. Covered with large clusters of white flowers in mid summer, in late summer and fall it displays great masses of pink-red seeds. Finally, the winter season highlights its shaggy bark. It does require shaping to highlight its normally "stemmy" form - a central leader formed early helps to make it a highly marketable tree, but it cannot be reshaped if neglected when small.

LP40ci Re-pot into #2 Zones 5-9 \$9.40 (10)+

Lindera benzoin

Spicebush

Its autumn color, early spring flowers, small habit, ease of care, and fragrant foliage make this shrub highly ornamental. It is well-adapted in wet areas, great for naturalizing, and rarely taller than head-high.

1-2' Re-pot into #5 Zones 4-8 \$3.05 (50)+

Our availability lists are emailed and posted on our website beginning mid August. Look for them monthly after mid-November.

Sweet Gum

LIQUIDAMBAR

Liquidambar styraciflua 'Gold Beacon' Gold Beacon Sweet Gum

We're honored to work with so many great plantsmen. Charles Allen of Green Biz Nursery asked us to bring to market this distinctive selection. Foliage emerges light green and quickly changes to golden color without fading for the remainder of the season. autumn foliage is red and orange; growth is only a little slower than typical of the species.

#1 3-4'	Re-pot into	Zones 5-9
	#5	\$17.10 (5)+
Price includes a \$1.00 royalty		

Liquidambar styraciflua 'Silver King' Silver King Sweetgum

Bright green leaves with creamy-white margins that become flushed with a rosy color in late summer and autumn. Especially striking when planted against a dark background. Slow growing, hardy.

#1 2-3'	Re-pot into	Zones 6-9
	#5	\$14.50 (5)+

Liquidambar styraciflua

'Slender Silhouette'



Slender Silhouette Sweetgum

Unusual noteworthy tree that grows in a very tight, columnar form, a sort of deciduous version of Italian cypress. Like the species, it is widely adaptable. Good fall color.

#1 3-4' 4-5' TR HVY	Re-pot into	Zones 6-9
	#5 #10	\$16.10 (5)+ \$21.35 (5)+


Do your staff have a meter to verify salinity levels and nutrition of your plants? A helpful instrument to verify salt levels and soil mix nutrition is the salinity meter from Myron L Company
www.myronl.com



Liquidambar styraciflua 'Silver King'

Magnolia

LIRIODENDRON

Liriodendron tulipifera 
Tuliptree

Among the tallest of our native American hardwoods, it shares much in common with *Magnolia acuminata*. Intriguing cup-shaped flowers of orange, yellow, and green in early summer. Grows fast if planted in deep, moist soil, but it will languish if planted in a dry or compacted area.

LP21ci 1-2'
2-3' LT TR
3-4' LT TR

Re-pot into

#5

#5

#5



Zones 5-9

\$3.25 (25)+

\$5.50 (10)+

\$7.75 (10)+

"Re-pot into"

What does it mean?

To help you consider your liner investment and profit opportunity, we recommend container options for you to pot up each size we offer.

MAGNOLIA

Magnolia Black Tulip® 'JURmag1'

Black Tulip® Magnolia

This tree has it all with dramatic, goblet-shaped blooms of black-purple, up to 6 in. across on quick-to-flower small trees. Larger growing, and with darker flowers than 'Genie'™. These flowers are by far the darkest colored of magnolia blooms. Their fragrance and dense presentation on small trees justifies planting Black Tulip® near doorways and paths.

#1 2-3'

#1 3-4'

Re-pot into

#5

#7

Zones 5-9

\$21.50 (5)+

\$24.75 (5)+

Prices include a \$3.00 royalty

Magnolia Burgundy Star™ 'JURmag4' PP20,346

Burgundy Star™ Magnolia

From New Zealand by leading magnolia breeder Mark Jury, Burgundy Star™ has large (up to 5 inch diameter) gorgeous claret red, lightly fragrant blooms which cover the tree in early spring. They seem to be exceptionally long lasting and the color is stable. The blooms cluster along the stems, leading to a very luxuriant look. As a 10 year old tree it grows up to 11 feet in height and 12 feet wide.

#1 2-3'

Re-pot into

#5

Zones 5-9

\$22.95 (5)+

Price includes a \$3.00 royalty



Liriodendron tulipifera seedlings



Magnolia Burgundy Star™ 'JURmag4' PP20,346

Ask us about magnolia varieties that bloom in their first season of your care, selling fast for a quick profit.



Two examples of precocious magnolias: many of these liners flower the first spring after grafting.

Choice varieties and unusual species that merit your attention...

SE Heat

	page
• <i>Cercis canadensis</i>	15
• <i>Cotinus obovatus</i>	22
• × <i>Gordlinia grandiflora</i>	24
• <i>Liriodendron tulipifera</i>	27
• <i>Magnolia macrophylla</i> ssp. <i>ashei</i>	35
• <i>Magnolia virginiana</i> var. <i>australis</i> 'Green Shadow'	36
• <i>Oxydendrum arboreum</i>	40

Tough as Nails

	page
• <i>Acer campestre</i>	4
• <i>Acer griseum</i>	4
• <i>Acer pseudoplatanus</i> 'Esk Sunset'	7
• <i>Carpinus betulus</i>	12
• <i>Celtis occidentalis</i>	14
• <i>Cotinus coggygria</i> var. <i>purpurea</i>	22
• <i>Ginkgo biloba</i> Goldspire	24

Northern Cold

• <i>Acer triflorum</i>	8
• <i>Betula nigra</i> Heritage®	12
• <i>Betula nigra</i> Northern Tribute®	12
• <i>Carpinus caroliniana</i>	13
• <i>Carpinus caroliniana</i> Fire Belle™	13
• <i>Celtis occidentalis</i>	14
• <i>Chionanthus virginicus</i>	16
• <i>Comptonia peregrina</i>	16
• <i>Ginkgo biloba</i>	23
• <i>Stewartia pseudocamellia</i>	43

Connoisseur Plants

• <i>Acer palmatum</i> 'Ukigumo'	6
• <i>Acer</i> ×Morning Starburst™ 'Morton UW'	10
• <i>Daphne</i> × Perfume Princess®	47
• <i>Magnolia</i> c. Marilyn's Choice™	34
• <i>Magnolia</i> 'Sunsation'	32
• <i>Magnolia</i> × 'Coppertallica'	30
• <i>Parrotia persica</i> Golden BellTower™	40
• <i>Stewartia pseudocamellia</i>	43

Specimens

• <i>Acer palmatum</i> 'Emperor I'	5	• <i>Cornus kousa</i> Snow Tower®	18
• <i>Acer palmatum</i> 'Twombly's Red Sentinel'	6	• <i>Cornus kousa</i> 'Summer Fun'	18
• <i>Acer</i> ×Morning Starburst™ 'Morton UW'	10	• <i>Halesia diptera</i> var. <i>magniflora</i>	25
• <i>Aesculus glabra</i> Lavaburst®	10	• <i>Magnolia</i> c. Marilyn's Choice™	34
• <i>Carpinus betulus</i> 'Pinocchio'	13	• <i>Magnolia</i> 'Gold Star'	31
• <i>Carpinus caroliniana</i> Fire Belle™	13	• <i>Magnolia</i> Spring Welcome®	32
• <i>Carpinus coreana</i> Model Rocket™	14	• <i>Nyssa sylvatica</i> Green Gable™	39
• <i>Carpinus</i> × Skylark™	14		



***Magnolia* × 'Coppertallica'**

***Magnolia* 'Butterflies'** **Butterflies Magnolia**

An upright, spreading small tree with abundant flowers of pleasing yellow color. If spring is warm, flowers tend toward a cream color.

	Re-pot into	Zones 5-9
#1 2-3'	#5	\$18.50 (5)+
#1 3-4'	#5	\$21.75 (5)+

***Magnolia* Cameo** PP27,222 P3 **Cameo Magnolia**

Cameo is among the latest releases from the New Zealand Magnolia Grove breeding program of Vance Hooper. A stunning bloom with a sculpted form like a cameo brooch. Reddish purple exterior with white-flushed, red-purple interior. Cameo has exceptional flower power, second only to Genie™ for flower abundance. The high rate of flower production both in spring and summer keeps the plant small with a compact habit.

	Re-pot into	Zones 5-9
#1 2-3'	#5	\$21.95 (5)+
Price includes a \$2.00 royalty		

**Where else can you find 35 kinds of
the finest magnolia liners - "WOW"
trees for your clients?**

***Magnolia* × 'Coppertallica'** **Coppertallica Magnolia**

This is a beautiful new evergreen introduction from Heritage. Its leaves are a shiny dark green on top. Underneath, the fuzzy shimmering coppery color of its namesake. You'll spend so much time looking at the leaves that you might not even notice the very pretty, fragrant creamy white flowers that boast a hint of purple pink in the center. Hardy to below 0°F.

	Re-pot into	Zones 6-10
#1 3-4'	#7	\$22.75 (5)+

Price includes a \$1.00 royalty

***Magnolia* 'Daybreak'** **Daybreak Magnolia**

The late August Kehr of Hendersonville, NC considered this his finest magnolia hybrid, and we whole-heartedly agree. Upright in form, the blooms are delightfully fragrant. It has two significant attributes. First, it blooms much later than *M. ×soulangiana* (6 weeks) so the flowers seldom freeze. Second, the rich pink flowers have a crisp, translucent character to them that makes a dramatic contrast to the duller pink blooms of *M. ×soulangiana* selections. These plants are quite a prize.

	Re-pot into	Zones 5-8
#1 2-3'	#5	\$18.50 (5)+
#1 3-4'	#7	\$21.75 (5)+

**Order early for best
size selection.**

Magnolia 'Elizabeth' Elizabeth Magnolia



One of the earliest-introduced yellow-hued magnolias, flowering precociously and reliably every year. 'Elizabeth' enjoys excellent name recognition. Well-known for its fragrant, creamy yellow flowers, pyramidal habit, and vigorous juvenile growth. *Magnolia acuminata* × *Magnolia denudata*.

	Re-pot into	Zones 5-8
#1 2-3'	#5	\$18.50 (5)+
#1 3-4'	#7	\$21.75 (5)+

Magnolia Felix® 'JURmag2' PP10/335,927 Felix® Magnolia

Bred in New Zealand by leading magnolia breeders, Felix and Mark Jury, Magnolia Felix® is stunning. In early Spring the reward is a mass of magnificent, 12 inch, open-faced hot pink flowers. It is an upright smaller tree growing to a height of 16 feet, making it suitable for smaller gardens.

	Re-pot into	Zones 5-9
#1 2-3'	#5	\$22.95 (5)+
Price includes a \$3.00 royalty		

Magnolia 'Galaxy' Galaxy Magnolia



Magnolia liliiflora 'Nigra' and *Magnolia sprengeri* 'Diva' were crossed to make this handsome early hybrid. Very dark purple buds open to medium purple 8 in. flowers on this hardy upright tree. Consistently praised by our clients as a dependable money-maker for its precocious blooming habit, ease of care, and fast growth in the nursery.

	Re-pot into	Zones 5-9
#1 2-3'	#5	\$18.50 (5)+
#1 3-4'	#7	\$21.75 (5)+

Magnolia Genie™ Genie™ Magnolia

The culmination of 15 years of breeding - a compact, small tree maturing at 10-13 ft. tall. Sensational black-red buds open to small, globular tulip-shaped blooms of deep rich, maroon-purple - both inner and outer surfaces. Reflexed petal tips fade to a lighter magenta-rose. 'Genie' has lightly scented blooms.

	Re-pot into	Zones 5-9
#1 2-3'	#5	\$20.30 (5)+
#1 3-4'	#7	\$23.55 (5)+

Prices include a \$1.80 royalty

Magnolia 'Gold Star' Gold Star Magnolia

A vigorous tree of uniform, pyramidal habit, having light yellow frost-tolerant flowers. Even without its flowers, it is worth growing for its handsome bronze new foliage. A choice plant, too-little known and used.

	Re-pot into	Zones 5-9
#1 2-3'	#5	\$18.50 (5)+
#1 3-4'	#7	\$21.75 (5)+

Magnolia Honey Tulip™ 'JURmag5' PP 26685P3 Honey Tulip™ Magnolia

A stunning addition to magnolia options and another introduction from breeders Felix and Mark Jury. It produces magnificent, 6-inch honey gold, goblet-shaped flowers, almost tulip-like, in early spring. Honey Tulip™ is an upright smaller tree growing to a height of 12 feet, making it suitable for small gardens.

	Re-pot into	Zones 5-9
#1 2-3'	#5	\$22.95 (5)+
Price includes a \$3.00 royalty		

Magnolia 'Galaxy'



Magnolia 'Judy Zuk'

Judy Zuk Magnolia

Honoring the former director of both Brooklyn Botanic Garden and Scott Arboretum, it is upright and has fragrant yellow and pink, tulip-shaped flowers. Always popular, so order early.

	Re-pot into	Zones 5-9
#1 2-3'	#5	\$19.95 (5)+
#1 3-4'	#7	\$23.45 (5)+

Magnolia 'Rose Marie'

Rose Marie Magnolia

Rose Marie has large bright pink flowers that glow wonderfully in the sunlight. It blooms fairly late but for a long time and with a good number of blooms. A cross between 'Pink Surprise' and 'Daybreak'.

	Re-pot into	Zones 5-9
#1 2-3'	#5	\$18.65 (5)+
#1 3-4'	#7	\$21.85 (5)+

Magnolia Spring Welcome®

Spring Welcome® Loebner Magnolia

Magnolias are rarely winter hardy in zone 3, but this introduction developed by North Dakota State University from a seedling that has proven to be quite winter hardy in USDA zone 3 for the past 20 years, even after winters with temperatures down to minus 38F, is such a plant. Plants are dense, well branched and flowers are pale pink in bud, gradually opening to pristine white with 11 - 13+ tepals and 3 to 4 1/2-inches in diameter.

	Re-pot into	Zones 3-8
#1 2-3'	#5	\$19.30 (5)+

Price includes an \$0.80 royalty

Magnolia 'Sunsation'

Sunsation Magnolia

During the 2011 Magnolia Society meeting in Rhode Island, a majority of women in the crowd raved about this abundant bloomer with its rosy-accented flowers. It's a wonderful selection due to the warm color tones, blooming later than any of the other yellows and before the emergent leaves. August Kehr, the hybridizer, would have never accepted much credit for this plant he created, but he deserves all our thanks for his exceptional work, including this plant. Interesting story: On the way to see Augie from Raleigh, NC Pat McCracken and Mark Krautmann decided to accept August's invitation to name all of his (at that time, only numbered) superior yellows. Before we got to Hendersonville where he and his wife lived, we came up with Stellar Acclaim, Sunsation, Solar Eclipse, Hot Flash, and Sunspire. Augie was too modest to name his own "children".

	Re-pot into	Zones 5-9
#1 2-3'	#5	\$19.25 (5)+
#1 3-4'	#7	\$23.45 (5)+

The Gold Medal Plant Award of the Pennsylvania Horticultural Society

recognizes trees, shrubs and woody vines of outstanding merit for their superb eye-appeal, performance, and hardiness in Zones 5-7.



Magnolia Spring Welcome®



Magnolia 'Tinkerbelle' PP31,317P2

Magnolia 'Tinkerbelle' PP31,317P2

Tinkerbelle Magnolia

Tinker Belle is a really beautiful Magnolia and we expect it to be in big demand. Fast growing it blooms well on young plants in the nursery. The buds open to numerous dark magenta, 3" upright flowers with pale pink interiors and a very sweet fragrance. Small in stature it will make an excellent specimen for smaller gardens, container culture or a shrubby boarder. The plants set buds readily in the nursery and the color and fragrance are unique attracting a lot of interest in the garden center. In Europe it is sought after for cut flower production.

	Re-pot into	Zones 5-9
#1 2-3'	#5	\$21.95 (5)+
Price includes an \$2.00 royalty		

Magnolia 'Vulcan'

Vulcan Magnolia

Spectacular large, ruby-red flowers and compact size characterize this trouble-free nursery plant. Even the large winter flower buds are ornamentally appealing with their distinctively thick protective covering of brownish gray "fur" to shield them from the cold. In full bloom, this short plant is unrivaled for attractiveness because the blooms are so easy to see up close.

	Re-pot into	Zones 7-9
#1 1-2'	#3	\$15.35 (5)+
#1 2-3'	#5	\$18.50 (5)+

Magnolia 'Yellow Bird'

Yellow Bird Magnolia

A pyramidal tree with dark green leaves. Yellow Bird's small flowers appear with the foliage and have a good deep yellow color. Trouble free in the nursery, a consistent seller. *Magnolia acuminata* × *Magnolia liliiflora*.

	Re-pot into	Zones 5-9
#1 2-3'	#5	\$18.50 (5)+
#1 3-4'	#5	\$21.75 (5)+

Magnolia biondii

Hope for Spring Magnolia

This exciting magnolia species, as far as we can tell, has seldom been used in North America as a rootstock. Yet, it offers unique advantages as contrasted to *Magnolia kobus* as a rootstock to extend the range of magnolias beyond where they are presently grown. Specifically, compared to Kobus magnolia, it has better high pH tolerance and increased drought tolerance. Native in continental North China, where the climate is more challenging to magnolias, its constitution is sturdier in cold, dry, high pH soils that may cause Kobus magnolia to languish. Kobus is Japanese, its islands surrounded by climate-moderating water.

Have long-standing North American propagation habits and supply issues limited our imaginative use of alternative rootstocks? *Magnolia kobus*, *M. salicifolia* and *M. biondii* are each in the Section Yulania, allowing their use as compatible rootstocks for the majority of magnolia cultivars in nursery propagation. Widely grown in China as the prevailing rootstock for magnolias

	Re-pot into	Zones 6-8
LP21ci 3/16 caliper	#2	\$3.40 (25)+
LP21ci 1/4 caliper	#2	\$3.80 (25)+



Magnolia 'Yellow Bird'



Magnolia 'Vulcan'



Magnolia grafts

***Magnolia cylindrica* 'MJK-MC1' US PP34,917**

Marilyn's Choice™

Marilyn's Choice™ Magnolia

Literally the single tree selection distinguished enough to merit patent status after 41 years of watching millions of seedlings at this firm. Even in this modest catalog, we list a whopping 34 additional cultivars and seedlings. So, to be distinctly different, to stand the test of time, how does this selection qualify in an already crowded field? First, it's tightly columnar in habit as inside front cover shows, so it qualifies to plant it in a wide variety of residential and commercial settings. Second, it's a solid "nursery plant" meaning it has no observed pest and disease issues, even in the difficult humid, hot conditions of South Carolina where astute plantsman Bob Head acclaims it far superior there to the popular variety, 'Galaxy'. Sales departments will love it because its quick finish in a container with multiple flower buds. Hardiness of the species is listed as Zones 5-9, so it covers an enormous spread of the country. We're a premier magnolia propagator; we know how to grow them well. Book a few of these and see for yourself how this one will set itself and your firm apart from the competition

	Re-pot into	Zones 5-9
#1 2-3'	#5	\$18.50 (5)+
#1 3-4'	#5	\$21.75 (5)+

Order Priority

Contact us to roll over your order annually. It helps to prioritize your needs in case we need to adjust quantity or sizes after final grades.

***Magnolia cylindrica* 'MJK-MC1' US PP34,917**
Marilyn's Choice™

Magnolia grandiflora 'Bracken's Brown Beauty'



Bracken's Brown Beauty Southern Magnolia

A remarkable, benchmark selection due to its reliable hardiness in the north end of the species range. Heavy brown fuzz beneath the leaf lends the evergreen foliage extra freeze protection and insulation from low-humidity winter air. Moreover, this selection matures to about half the height of the monarch trees of the deep South. Leathery deep green, shiny foliage on the upper surface contrasts sharply with the brown undersides, so this makes a great cut-branch candidate and is widely used for Christmas wreaths and bouquets. Intensely fragrant cup-shaped flowers add to its many charms. No serious P&D issues

#1 2-3'

Re-pot into

#3

Zones 6-9

\$14.55 (5)+

#1 3-4'

#5

\$16.45 (5)+

Magnolia kobus



Kobus Magnolia

Very hardy - the rootstock of choice for a rich selection of new hybrids. These liners have a robust, disease-free root system for field planting or potting up.

LP21ci 3/16" caliper

Re-pot into

#1

Zones 4-8

\$3.65 (25)+

LP21ci 1/4" caliper

#1

\$3.95 (25)+

Magnolia macrophylla



Bigleaf Magnolia

Bigleaf Magnolia appears tropical, but is surprisingly hardy. A medium to large native tree with huge leaves, impressive white, intensely fragrant flowers and intriguing autumn fruits.

Re-pot into

#3

Zones 5-8

\$12.55 (10)+

Magnolia macrophylla ssp. ashei

Ashe Magnolia

A scaled-down version of *Magnolia macrophylla*. Precocious bloomer, it sometimes buds up to yield a flower in a pot only 3 years after germination. Fragrant flowers in June: what an up close delight! Structurally, they're so fascinating, for their delicate scent and always tempting to touch. It reminds one of the biblical verse in praise of lilies "...Solomon in all his glory was never arrayed like one of these..." A 12 ft. multi-stem shrubby form in the Krautmann landscape produces 20 dinner plate-sized blooms over a 2-week period. For such ephemeral blooms, it's a wonder to contemplate that this plant and its cousins have populated the planet since before the dinosaurs. YOU NEED this plant, whether you realize it or not. Grow a few in your home garden where you can simply relish them with no prices on them. They are in fact, a priceless experience for any thoughtful nurseryman or gardener.

Re-pot into

#3

Zones 6-9

\$12.55 (10)+

LP40ci



Magnolia macrophylla

Magnolia virginiana

Sweetbay Magnolia

Distinctive among magnolias for its shiny narrow leaves, dark green above and a downy white beneath. A refined small tree (best) or large multi-stemmed shrub if given a prominent place in the landscape where its wonderfully fragrant flowers can be appreciated.

MP
#1

Re-pot into

#2
#2

Zones 5-9

\$3.35 (50)+

\$8.00 (5)+

Magnolia virginiana Moonglow®

Moonglow® Sweetbay Magnolia



The extraordinary growth rate of this cultivar coupled with its precocious blooming character make it a lucrative item. Moonglow® will grow to 5 ft. and bloom within 2-3 years. Selected and named by Earl Cully, this clone is surprisingly hardy to -33°F. Lemon-fragrant creamy white blooms over a long period in late spring.

Re-pot into

#2

Zones 3-9

\$13.15 (10)+

LP40ci

Price includes a \$0.90 royalty

Magnolia virginiana var. *australis*

'Green Shadow'

Green Sweetbay Shadow Magnolia

Honoring the great plantsman Don Shadow, this magnolia is evergreen to -15°F. Sweet lemon fragrance, white flowers, good tight oval form and dark foliage combine to make it an exceptional selection.

Re-pot into

#2

Zones 5-9

\$13.25 (10)+

LP40ci

Magnolia virginiana var. *australis*

'Northern Belle'

Northern Belle Sweetbay Magnolia

A super hardy selection that has withstood -35°F, although it drops its leaves at that temperature. The flowers are fragrant and the leaves are darker green than those of Moonglow®.

Re-pot into

#2

Zones 3-9

\$12.25 (10)+

LP40ci



Magnolia virginiana Moonglow®



Mahonia aquifolium

MAHONIA

Mahonia aquifolium Oregon Grape

Upright evergreen shrub with spiny leaves. Native in the Northwest, it benefits from occasional pruning to keep foliage clean and diminish its tendency to become overgrown. Native Americans used the stems and roots to make a yellow dye.

MP

Re-pot into
#1

Zones 5-8
\$2.80 (50)+

Mahonia ×media 'Charity' Charity Mahonia



Beautiful across all seasons for its architecturally bold and symmetrical form. Bright yellow late-winter flowers. Here in the wet-winter Pacific Northwest, our 'Charity' stock block is totally free of leaf spot that infects *Mahonia bealei* so severely.

#1

Re-pot into
#5

Zones 6-9
\$10.25 (5)+

Mahonia ×media 'Winter Sun' Winter Sun Mahonia



Evergreen shrub with rich forest-green foliage to accent its bright yellow early winter flowers. Upright growth and drought/shade tolerance make this a great focal plant when winter's arrival means few possibilities to brighten the garden with fresh flowers.

#1

Re-pot into
#5

Zones 6-9
\$10.25 (10)+

Mahonia nervosa Cascades Mahonia



Short 1-2 ft. hardy Pacific Northwest native of medium texture. Attractive blue fruits accented by prickly, deep green, narrow leaves.

MP

Re-pot into
#1

Zones 5-8
\$3.10 (50)+



***Mahonia ×media* 'Winter Sun'**



Metasequoia glyptostroboides
plugs

Mahonia repens 
Creeping Mahonia

Hardier than its cousins and not as tall. It grows to only 1-2 ft., has satin foliage, and is more shade tolerant. An elegant low shrub for a spot where it can be left to spread without irrigation.

MP	Re-pot into	Zones 3-7
	#1	\$2.80 (50)+

METASEQUOIA
Metasequoia glyptostroboides
Dawn Redwood



This ancient tree evokes a sentiment of awe when one realizes it has endured change and upheaval essentially in its present form for millions of years. Discovered as a "living fossil" in China in 1941, it prefers a moist, well-drained soil. Dawn Redwood is a fast-growing, pest-free and fine-textured conifer, hardy and adaptable.

MP	Re-pot into	Zones 5-8
	#1	\$2.35 (50)+

MORELLA
Morella pensylvanica
Northern Bayberry

Small to medium-sized shrub with fragrant foliage, often used for naturalizing in states along the Atlantic coast from MA to SC. Famed for its use in making candles using the waxy berries during colonial times, its best present use is as an easy foundation plant, where it will tolerate compact or infertile soils.

MP	Re-pot into	Zones 3-7
	#1	\$2.40 (50)+

NYSSA
Nyssa sylvatica
Blackgum

With its brightly colored, shiny autumn leaves and wide range of additivity, especially well suited to wet sites. This is a great landscape tree. Unlike widely-planted Sweetgum, even seedlings of Blackgum are dependable for fall color. Needs pruning when young. These pot propagated plants ensure transplant success.

MP	Re-pot into	Zones 4-9
	#2	\$3.10 (50)+
	#5	\$7.05 (5)+
	#5	\$8.85 (5)+

Our availability lists are emailed and posted on our website beginning mid August. Look for them monthly after mid-November.

Nyssa sylvatica

Green Gable™ NSUHH' PP 22,951

Green Gable™ **Black Tupelo**

Green Gable™ is a great addition to American horticulture, with notably glossy foliage, and beautiful fall color. With its dominant central leader, it develops an attractive pyramidal form.

	Re-pot into	Zones 4-9
#1 3-4'	#5	\$21.10 (5)+
Price includes a \$1.85 royalty		

Nyssa sylvatica

Tupelo Tower™ 'WFH1' PP22,976

Tupelo Tower™ **Black Tupelo**

With all the great ornamental attributes of blackgum, including exceptional fall color and ease of care, this selection allows even more flexibility of location because of its columnar habit. Tupelo Tower™ was selected from a Zone 4 seedling population.

	Re-pot into	Zones 4-9
#1 3-4'	#5	\$20.25 (5)+
Price includes a \$1.00 royalty		



Nyssa sylvatica 'Wildfire'

Nyssa sylvatica 'Wildfire'

Wildfire Black Tupelo



What a colorful beauty! Shiny, burnt orange-red new growth makes this one of the most exciting new Blackgum cultivars. Try some of these easy to grow trees, and save one for your own landscape!

	Re-pot into	Zones 5-9
#1 3-4'	#5	\$19.20 (5)+

Nyssa sylvatica 'Zydeco Twist'

Zydeco Twist Black Tupelo

Blackgum is among our native tree prizes, adapted over a wide range and consistently appealing. This contorted stem selection has a strong central leader and will create interest in our gardens because it is so unique.

	Re-pot into	Zones 4-9
#1 3-4'	#5	\$19.25 (5)+



Nyssa sylvatica

Green Gable™ NSUHH' PP 22,951

Size Guide pages 50-51

OXYDENDRUM

Oxydendrum arboreum

Sourwood

Exceptional ornamental with handsome glossy summer foliage. A medium tree that grows to 45 ft., it prefers full sun and an acidic, well-drained soil. Honeybees relish the nectar of the delicate, heather-like blooms, born on the branch ends like white bouquets in mid-summer. Sourwood honey is a particular delight, so special that it's sold only regionally in the Southeast, and fetches a premium at roadside stands. *Oxydendrum* in the autumn is a sight for tired eyes, as the foliage shows off rich blends of orange, red and yellow.

MP	Re-pot into #2	Zones 5-9 \$3.70 (25)+
----	-------------------	---------------------------

PARROTIA

Parrotia persica

Persian Ironwood

Essentially the tree form of witchhazel. It naturally becomes a low-branched tree, typically two-thirds as broad as it is tall. Bark exfoliates on older branches; leaves turn brilliant red, yellow and orange in autumn. With a bit of selective pruning when it's young, but minimal care thereafter, it becomes a medium-sized tree of appealing form. Maroon spring flowers are small, easily missed but attractive.

1-2'	Re-pot into #2	Zones 5-8 \$3.05 (50)+
2-3'	#2	\$3.80 (50)+

Parrotia persica

Golden BellTower™ 'Chrishaven1' PP28,584

Golden BellTower™ Columnar Ironwood

A superior, tight form that stays columnar over the years. Clean, insect and disease resistant green leaves turn bright golden yellow and red-orange in autumn. Over time the bark handsomely exfoliates. Golden BellTower™ is a moderate grower and will reach 25 ft. tall and 10 ft. wide over 8-10 years. Makes an excellent choice for smaller yards, and is a logical choice for commercial plantings or as a street tree. The best fall color will be achieved by growing it in full sun; however, it will grow equally well in part shade. Drought resistant once established.

LP40ci	Re-pot into #3	Zones 5-8 \$12.90 (10)+
4-5' TR	#10	\$22.00 (5)+
5-6' TR	#10	\$23.75 (5)+

Prices include a \$1.00 royalty

Parrotia persica 'Vanessa'

Columnar Persian Ironwood

Upright form of a tough small tree that requires almost no care in return for its year-round appeal. Patchy bark, spring bronze-green foliage, exceptional month-after-month autumn color, and attractive winter branch structure put into a class that almost approaches the perfection of Paperbark Maple and Stewartia. What it lacks in flower appeal is balanced by its extreme drought tolerance and overall tough character.

LP40ci	Re-pot into #3	Zones 5-8 \$10.90 (10)+
4-5' TR	#7	\$18.60 (5)+
5-6' TR	#10	\$20.10 (5)+

PLATANUS

Platanus occidentalis

American Sycamore

American sycamore is a common sight to many because it was once commonly used as a street tree. Now it is most regularly used for revegetation and roadside restoration projects. Native, easy to grow.

2-3'	Re-pot into #5	Zones 4-9 \$1.70 (50)+
3-4'	#5	\$2.30 (50)+

QUERCUS

Quercus alba

White Oak



Fastidious in its cultural requirements, but worth the trouble if its needs are met in an undisturbed, well-drained soil where it can be allowed to develop its picturesque spread.

LP21ci 6-12"	Re-pot into #2	Zones 4-8 \$3.25 (25)+
LP21ci 1-2'	#2	\$4.50 (25)+
2-3' TR	#7	\$8.40 (10)+
3-4' TR	#10	\$11.00 (10)+

Order early for best size selection and priority status.



Parrotia persica 'Vanessa'



Platanus occidentalis

Quercus bicolor Swamp White Oak

Flaking bark texture, even on young trees. Although its common name indicates that it prefers moist areas, it is drought tolerant. The silver undersides of the leaves lend contrast to the upper leaf surface, prompting the species name "bicolor". Among the easiest of the oaks to transplant, it is also hardy and has few insect or disease problems.

	Re-pot into	Zones 3-8
LP21ci 3/16" caliper	#3	\$3.35 (25)+
LP21ci 1/4" caliper	#3	\$3.65 (25)+
3-4' TR	#10	\$11.00 (10)+
4-5' TR TRUCK PREF	#10	\$12.90 (5)+

Quercus gambelii Rocky Mountain White Oak

Native to the "Four Corners" States, this deciduous tree can be grown as a multistem shrub or small single stem tree, eventually reaching 45 ft. Tolerates high pH soil. Drought resistant once established.

	Re-pot into	Zones 4-6
LP21ci	#2	\$3.35 (25)+

Quercus garryana Oregon White Oak



Named to honor Nicholas Garry of the Hudson Bay Company, this is the climax species of the pre-1850s Willamette Valley oak savannah. We see occasional remnants of these original trees, some of which measure more than 5 ft. through and exceed 300 years old. These are truly heritage trees, having sheltered and fed the Kalapuya Indians, who gathered acorns by the ton and processed them to make thick soup and flatbread.

	Re-pot into	Zones 6-9
LP21ci	#2	\$3.45 (25)+
2-3' TR	#2	\$8.40 (10)+
3-4' TR	#3	\$11.00 (10)+
5-6' TR	#3	\$14.70 (5)+

Quercus Kindred Spirit® 'Nadler' PP17,664 Kindred Spirit® Oak

Chief among its merits is strong mildew resistance, in contrast to Columnar English Oak, which often gets terribly infested with this leaf disease. Strongly columnar in outline, it's 4-5 times taller than wide in outline, significantly more columnar than the similar selection, Regal Prince®. Grafted onto vigorous *Quercus bicolor* liners with mycorrhizal roots, these have excellent survivability without significant transplant shock.

	Re-pot into	Zones 4-8
XP 2-3'	#5	\$17.25 (5)+
XP 3-4'	#5	\$19.40 (5)+
5-6' HVY TRUCK ONLY	#5	\$27.40 (5)+

Prices include a \$2.00 royalty

Great Plant Picks...

a selection of outstanding plants for the maritime Pacific Northwest.

greatplantpicks.org



Quercus palustris

Pin Oak

Widely planted throughout the eastern US because it tolerates wet sites and disturbed, compacted soils. Pin Oak is sometimes seen with chlorotic foliage caused by iron deficiency in high pH soils. In such areas, *Quercus ellipsoidalis* is a superior landscape choice, better adapted to limestone soils.

	Re-pot into	Zones 5-8
LP21ci 1-2'	#2	\$3.80 (25)+
3-4' TR	#7	\$11.00 (10)+
4-5' TR TRUCK PREF	#7	\$12.90 (5)+
5-6' TR TRUCK ONLY	#7-10	\$15.95 (5)+

Quercus palustris 'Green Pillar'® PP9093

Green Pillar® Pin Oak

A Princeton Nursery clone with few apparent graft incompatibility problems. Maroon red autumn color and narrow habit, its branches don't droop like the species. Mature height 40-60 ft. with a 12-15 ft. spread.

	Re-pot into	Zones 4-8
XP 2-3'	#2	\$16.95 (5)+

Price includes a \$0.90 royalty

Quercus phellos

Willow Oak

A fine-textured tree with high branches, it makes a great specimen for a lawn or along a driveway because it doesn't develop a basal "hump" that heaves sidewalks like *Acer rubrum*. Fall color ranges from brown to yellow to russet red. Rapid growing, this is among the best of the eastern US oaks. Its narrow leaves are easily cleaned up from the lawn. The small acorns, like those of the pin oak, are relished by wildlife.

	Re-pot into	Zones 5-9
LP21ci 1-2'	#3	\$3.95 (25)+
3-4' TR TRUCK PREF	#7	\$11.00 (5)+
4-5' TR TRUCK ONLY	#7	\$12.90 (5)+

Quercus Regal Prince® 'Long' PP12,673

Regal Prince® Oak

Handsome, glossy deep green foliage and a bold, upright, oval silhouette. Leaf undersides are white with dense, downy hairs, helping keep the leaf dry - a significant factor in its resistance to mildew, to which Columnar English Oak is so susceptible.

	Re-pot into	Zones 4-8
XP 2-3'	#5	\$16.75 (5)+
XP 3-4'	#5	\$18.90 (5)+

Prices include a \$1.00 royalty

Quercus rubra

Northern Red Oak

Among the largest of the North American oaks, it grows fast and is easy to transplant.

	Re-pot into	Zones 3-9
LP21ci 1-2'	#2	\$3.80 (25)+
3-4' TR	#7	\$11.00 (10)+
4-5' TR TRUCK PREF	#7	\$12.90 (5)+
5-6' TR TRUCK ONLY	#10	\$15.95 (5)+

Quercus rubra 'Golden Dragon'

Golden Dragon Northern Red Oak

We received our initial scions from our good friend Ray Jackson, and while the coloration is striking there could be some incompatibility show up over time because it is a red oak and they are known for this problem. The foliage is a golden yellow and does burn a bit in Oregon but still the tree grows quickly while young.

	Re-pot into	Zones 3-9
XP 2-3'	#10	\$16.75 (5)+



Oak grafts
pulled for
shipment

Quercus × 'King Canute'

King Canute Southwest Oak™

Q. stellata × *havardii*. Growing as a giant, multi-trunked tree in western Oklahoma, King Canute is of hybrid origin, including at least *Q. stellata*, *Q. sinuata*, and *Q. havardii*. It has good fall color, a red-aurum. With branches sweeping to the ground it will have a full closed canopy of shiny green leaves with shallow lobes. Should do well in the Midwest and East.

XP 1-2'	Re-pot into	Zones 3-9
	#10	\$15.35 (5)+
Prices include a \$1.50 royalty		

SPIRAEA

Spiraea douglasii

Western Spirea

Under appreciated for its very showy pink flowers that attract multiple pollinators. This is an integral part of our wetland habitats in the West. Willamette Valley ecotype for use in revegetation.

1-2' CONSERVATION	Re-pot into	Zones 5-10
	#3	\$1.20 (50)+



Stewartia pseudocamellia

STEWARTIA

Stewartia pseudocamellia

Japanese Stewartia



Among the most desirable of all deciduous landscape trees. Camellia-like flowers in early summer. Striking bark patches that resemble pieces of a puzzle. Diminutive mature size, ideal as a small specimen tree. Red, yellow, and orange autumn leaf colors. This taxon is the ideal landscape tree - the complete package. Our strain is originally from the vicinity of Nikko Park in Japan, and has survived the extremely harsh winter lows of the Upper Peninsula in Quinnesec, Michigan. We're talking 35 below zero! Check out their amazing root systems, pot up or plant them out, and make some money.

MP LP21ci 3-4' TR 4-5' TR 5-6' TR	Re-pot into	Zones 4-7
	#3-5	\$4.85 (50)+
	#3-5	\$6.70 (25)+
	#5	\$18.15 (10)+
	#7	\$22.05 (10)+
	#10	\$28.00 (5)+

Did you know?

Our Stewartia are Zone 4 hardy: They have survived fine for years near Quinnesec on the Upper Peninsula of Michigan.



Quercus garryana



Styrax japonicus



Octavio inspecting
plants for shipment



Feliciano performing
his grafting magic

STYRAX

Styrax japonicus

Japanese Snowbell

Small leaves and profuse white, bell-shaped June flowers. Best planted where the masses of pendant blossoms may be seen from below, such as along a rock wall or embankment. Pest-free, hardy, and rapid-growing. Occasional pruning when it is young encourages an open branch habit so that its flowers are more easily seen.

MP Re-pot into #2 Zones 5-9
\$2.55 (50)+

SYMPHORICARPOS

Symphoricarpos albus

Snowberry

2-4 ft. shrub native across a broad swath in the upper latitudes of North America. Small pink flowers emerge in summer followed by white berries in the fall. Hummingbirds are attracted to the flowers. Its strong root system makes this shrub useful to control erosion on steep slopes of an embankment. Tolerates wet soils as well, so it is frequently used in riparian restoration. Used as an ornamental, easy to grow and gratifying with its persistent winter fruits. Occasionally head it back for best ornamental performance.

1-2' CONSERVATION Re-pot into #2 Zones 3-7
\$1.50 (50)+

TAXODIUM

Taxodium distichum

Baldcypress



Durable deciduous conifer adapted to colder climates and drier soils than those in its native Southeast. Best planted where it can develop unhindered, as it is naturally a large tree. Amazingly, it thrives from upstate New York to the High Plains of Texas and south to Florida. Lumber is highly prized for its decay resistance. Despite its large stature, its landscape appeal is evident in its lacy foliage texture, which becomes a handsome, distinctive blend of green, yellow and brown in autumn. The shaggy bark and bold architecture of its branches lend striking winter interest. Trouble-free, easy to grow and transplant if root-pruned or containerized.

MP Re-pot into #1-2 Zones 5-10
\$2.40 (50)+

ULMUS

Ulmus americana 'Princeton'

Princeton American Elm

Selected almost a century ago by New Jersey nurseryman William Flemer for its aesthetic merit. By stroke of good fortune, 'Princeton' has demonstrated moderate resistance to Dutch elm disease. Typical of this iconic American species in form and hardiness, it is an important part of the American experience, a relic selection from America's urban forest history, still adapted to its future so many generations later.

#1 Re-pot into #7 Zones 3-9
\$15.25 (5)+

WISTERIA

Wisteria frutescens 'Amethyst Falls'

Amethyst Falls Wisteria

Not rampant-growing like Asian wisterias, this American native produces a great number of small purple blooms over a long period. The dusky green vines climb, but it blooms on current-year shoots, so it can be pruned to any desired size without worry that it may not bloom.

LP40ci Re-pot into #3 Zones 5-9
\$8.05 (10)+

Wisteria macrostachya 'Blue Moon'

Blue Moon Kentucky Wisteria

Blooms 2-3 times during summer months. Cold hardy with medium green leaves and lavender-blue flowers on 10-12 in. racemes.

LP40ci Re-pot into #3 Zones 5-9
\$8.00 (10)+

We remove pot and plug material from their containers to save you freight and avoid plant damage.
See photos p. 20.



Taxodium distichum

Perennials & Wildflowers

Allium ampletens

Slim-leaf Onion

Native up and down the West Coast, with pale pink to white flowers this little onion is a cinch to grow. Native pollinators love the showy long lived flowers. Freely reseeding, large bunches of flowers are colorful for over 6 weeks. 8 inches tall. Key nectar species for Fenders Blue Butterfly.

BULB

Re-pot into
#1

Zones 6-9
\$0.90 (100)+

Asarum caudatum

Western Wild Ginger

Forming dense evergreen mats, this super ground cover shines all year round in shade. Adaptable to some drought, it looks even better if given a little summer irrigation. Short, to only 4 in., tall.

MP

Re-pot into
#1

Zones 7-10
\$3.85 (50)+

**Pacific Northwest natives:
Attract passionate gardeners,
pollinators, and make more profit.**

Asclepias fascicularis

Narrow-leaf Milkweed

Narrow-leaf milkweed is smaller in stature and blooms later than showy milkweed; it also tolerates very dry conditions. It would work well in a rock garden or xeriscape. Showy milkweed tolerates wet soils better, and has large, unusual, showy flower globes of pink-tinged, star-shaped flowers. The nectar-filled flowers, opening mid-summer, exude a pleasing sweet fragrance and produce magnificent seed pods on 2-3 ft. stems.

MP

LP40ci

Re-pot into

#1

#2

Zones 7-10

\$1.70 (50)+

\$3.15 (10)+

Asclepias speciosa

Showy Milkweed

With the Monarch butterfly now under threat, these host plants, native to the western US, will have great retail appeal for gardeners concerned about the butterfly. They also provide key pollinator resources to other butterflies and native bees in mid-summer.

MP

LP40ci

Re-pot into

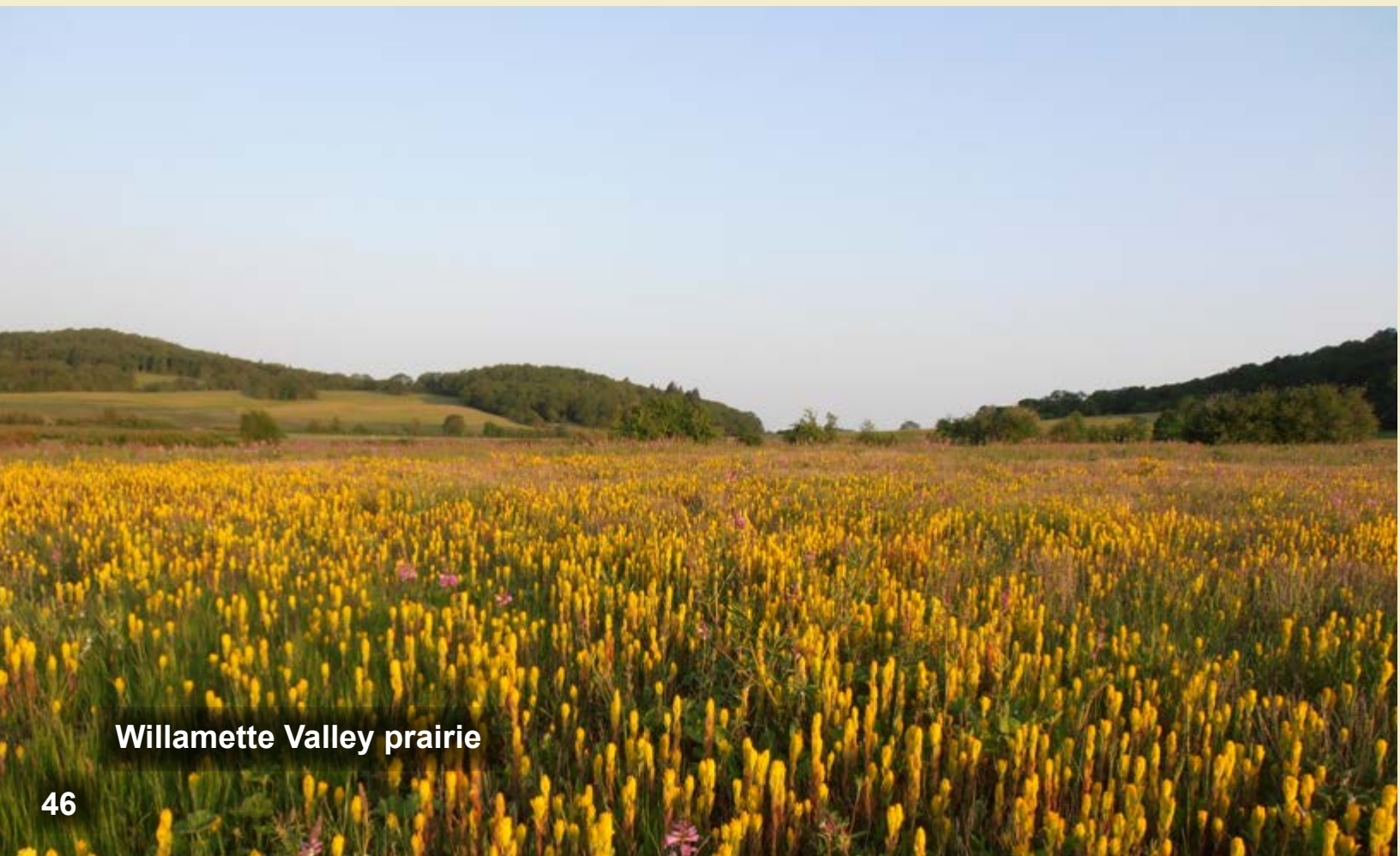
#1

#2

Zones 3-9

\$1.70 (50)

\$3.15 (10)+



Willamette Valley prairie



Iris tenax

Calochortus tolmei

Calochortus tolmei

Cat's Ear

It has been very rewarding developing some of the lesser Willamette Valley forbs into commercial crops, like the Cat's ear. In late spring and early summer foliage is followed by extremely fuzzy, white or pale pink flowers. Ample winter rainfall with sparse summer irrigation is best. Low growing, to 4 inches. These are small blossoming size bulbs. Key nectar species for Fenders Blue Butterfly and Taylor's Checkerspot. Ackeling elegant flowers.

	Re-pot into	Zones 6-9
BULB	#1	\$1.50 (100)+

Camassia leichtlinii or *C. quamash*

Great or Common Camas

A robust spring-blooming perennial with bright blue flowers, our native camas once clothed Oregon valleys in waves of striking color. Settlement and agriculture over the past 150 years have pushed it to marginal small pockets in wetlands, roadsides, and areas unsuited to cropping. Two ft. tall in blossom. Occasional nectar species for endangered Fenders Blue Butterfly.

With intense blue, starry flowers, each of our western native camas species adds early pollinator value to perennial gardens. Common Camas is shorter (12-18 inches) and blooms in early April; tall camas (24-30 inches) blooms in early May. Both attract many bee species with Common Camas, an important resource for reemerging queen bumblebees. Dormancy starts in June so it is a great candidate for mixing with other, later-blooming perennials.

	Re-pot into	Zones 4-10
BULB	#1	\$1.00 (100)+

Daphne × *Perfume Princess*® 'DapJur01'

Perfume Princess® *Daphne*

Evergreen, highly fragrant blooming hybrid of *D. odora* and *D. bholua*. "Perfume" does not adequately describe its wonderful fragrance. Vigorous and less fussy than either of its parent species, and bearing abundant, larger flowers than either parent as well. Exceptional plant, meriting multiple plants in any Maritime Northwest garden, but do remember to put it close-by or you may miss its fragrance.

	Re-pot into	Zones 7-9
LP40ci	#1	\$11.10 (10)+

Price includes a \$1.75 royalty

Disporum longistylum 'Night Heron'

Night Heron *Disporum*

A Heronswood Nursery selection with bamboo-like stems that emerge dark purple rather than green, sheathed at each node with golden-tan papery bracts. Makes a 4-5 ft. tall evergreen clump (hardy in Zone 6, but deciduous) with small white flowers followed by many shiny black berries. Enjoys rich, moist soil.

	Re-pot into	Zones 6-9
LP40ci	#1	\$9.15 (10)+

Gunnera tinctoria

Chilean Rhubarb

Gunnera is one of South America's best contributions to our gardens, with leaves easily reaching 5 ft. across and 7 ft. high, sometimes more! It is easy and rapid-growing in moist soil, blossoming annually with tiny flowers on large 2 ft. club-like structures. Our liners finish fast in a #2 or #3 container. (Note: For a plant that loves water, it seems oddly averse to the high summer humidity of the East and Southeast).

	Re-pot into	Zones 7-10
MP	#3	\$3.10 (50)+

Iris tenax

Oregon Iris

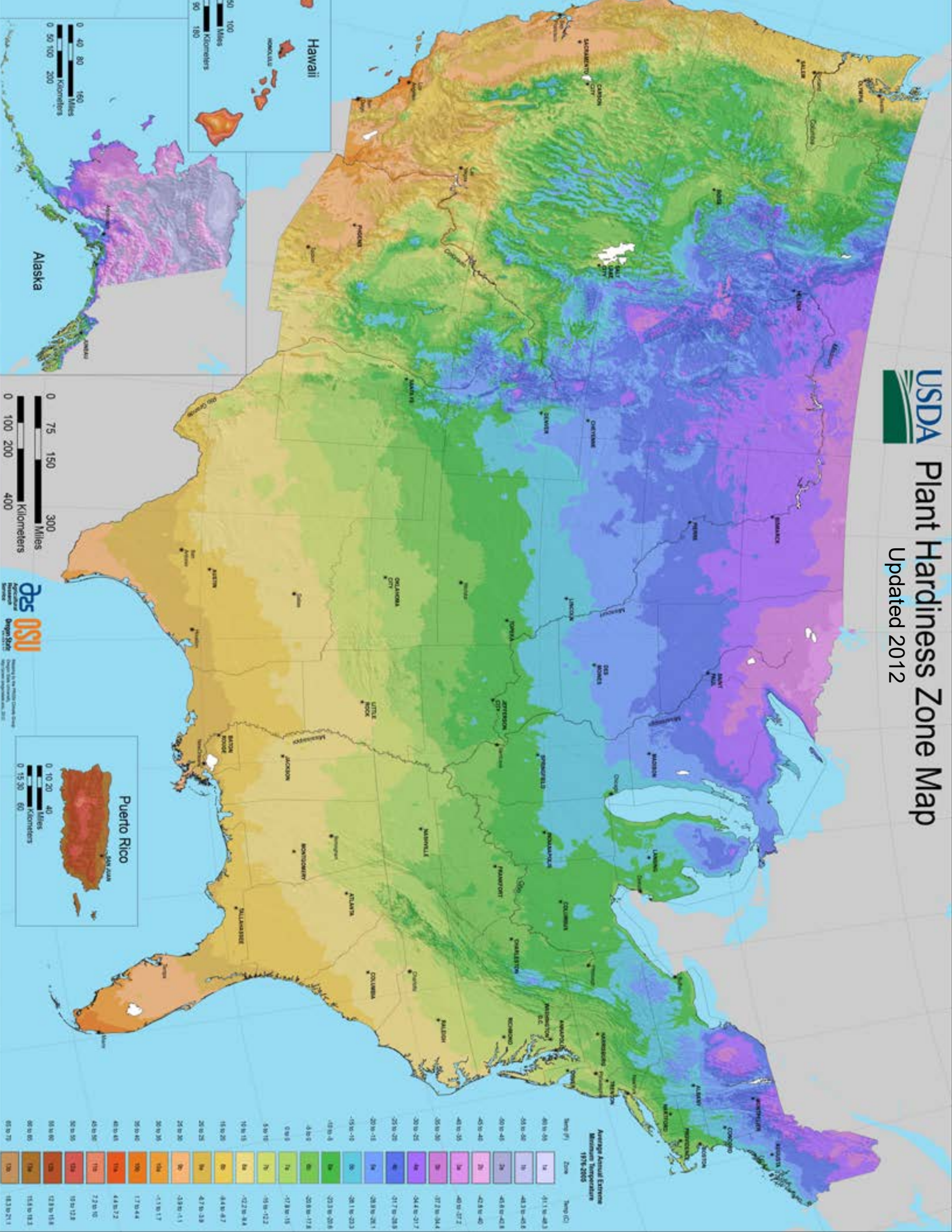
The leaves are tough, dark, grass-like, and nearly evergreen on this showy iris. It blooms in a spectacular color range from almost white to purple and all hues of blue in between. It is clump forming, blooming April-May, it is only 14 in. tall. This is an excellent, easy, very drought tolerant garden plant that is used far too infrequently. Nectar species for Dusky Wing and, occasionally, Fenders Blue Butterfly.

	Re-pot into	Zones 6-9
DIVISION	#3	\$1.75 (50)+



Plant Hardiness Zone Map

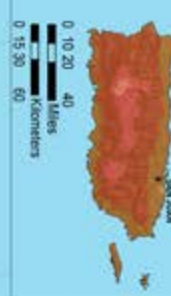
Updated 2012



Average Annual Extreme
Minimum Temperature
1976-2005

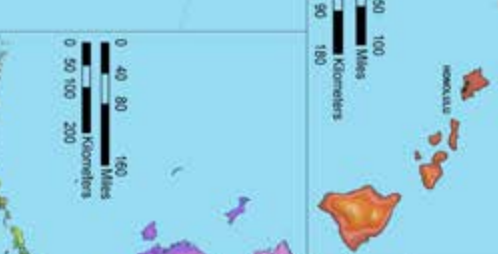
Temp (F)	Zone	Temp (C)
40 to 45	1a	-41.1 to -48.3
35 to 40	1b	-48.3 to -45.6
30 to 35	2a	-45.6 to -42.8
25 to 30	2b	-42.8 to -40.0
20 to 25	3a	-40.0 to -37.2
15 to 20	3b	-37.2 to -34.4
10 to 15	4a	-34.4 to -31.7
5 to 10	4b	-31.7 to -28.9
0 to 5	5a	-28.9 to -26.1
-5 to 0	5b	-26.1 to -23.3
-10 to -5	6a	-23.3 to -20.6
-15 to -10	6b	-20.6 to -17.8
-20 to -15	7a	-17.8 to -15.0
-25 to -20	7b	-15.0 to -12.2
-30 to -25	8a	-12.2 to -9.4
-35 to -30	8b	-9.4 to -6.7
-40 to -35	9a	-6.7 to -3.9
-45 to -40	9b	-3.9 to -1.1
-50 to -45	10a	-1.1 to 1.7
-55 to -50	10b	1.7 to 4.4
-60 to -55	11a	4.4 to 7.2
-65 to -60	11b	7.2 to 10.0
-70 to -65	12a	10.0 to 12.8
-75 to -70	12b	12.8 to 15.6
-80 to -75	13a	15.6 to 18.3
-85 to -80	13b	18.3 to 21.1

Puerto Rico



0 10 20 40 Miles
0 15 30 60 Kilometers

Hawaii



0 50 100 Miles
0 50 100 Kilometers

Alaska



0 75 150 300 Miles
0 100 200 400 Kilometers



Mapping to the National Climate Data
Interpretation and Analysis, 2012

seedlings & liners, inc. _____ Unusual Deciduous Species

Phone (503) 585-9835 Fax (503) 371-9688 sales@heritageseedlings.com

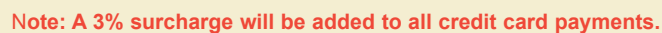
Shipping address _____

Billing (if different)

Telephone _____

Fax _____

E-mail



account number:

Expiration date:			/		
------------------	--	--	---	--	--

Credit card billing address:

Security code:

[illegible]

Please indicate NO SUB if size substitutions are not acceptable.

Container grown

We remove most plugs from their tray, or larger liners from the pot for UPS delivery. We net plug bundles with elastic netting to keep them organized and intact for shipping.



SP

Small Plug
104 cell tray
1.4 in. wide
2 in. deep
2.2 cu. in.



MP

Medium Plug
60 cell tray
1.9 in. wide
3.5 in. deep
9 cu. in.



LP21ci

Large Plug
25 cell tray
2.3 in. wide
5.5 in. deep
21 cu. in.



LP40ci

Large Plug
12 cell tray
3 in. wide
7.1 in. deep
40 cu. in.



XP

Extra Large Plug
6 cell tray
4.3 in. wide
7.9 in. deep
97 cu. in.



#1

1-2' #1 WHIP
1 year whips
from "gallon" pots

Guide

Bareroot

Seedling propagation

We plant almost no seed directly in the field. Rather, we seed bulb trays with artificial media, allowing root pruning in the elevated trays. Seedlings are harvested in winter and graded by height or by stem diameter.



Caliper grading - rootstock

Size

1/8'
3/16'
1/4'
3/8'

Stem diameter

1/8 to 3/16 inch
3/16 to 1/4 inch
1/4 to 3/8 inch
3/8 to 1/2 inch

Transplants



3-4' LT BRCH
2 or 3 year
field grown



TR
2 or 3 year
transplants

The Fine Print

Acknowledgments

- ✿ We will acknowledge your order soon after you place it. As final harvest grades and counts come in, we will know more accurately what we will ship and call you if there are significant concerns.
- ✿ We will do our best to match the sizes and quantities in your order. However, at shipping we may still need to substitute a size smaller or larger than we originally acknowledged unless you specify “no substitutions”.

Deposits and Payment

- ✿ If you are on **Pay in Advance (PIA)** terms you must submit a 25% deposit due by December 15th. The balance is due two weeks before shipping.
If you cancel your spring order after January 15th, or fail to complete full payment you may forfeit your deposit.
- ✿ **PIA** customers prepay for plants and shipping costs based on our best estimate of total charges. Despite our experienced judgement on expected UPS charges, if there's a remaining shipping balance, we'll bill you the final charges. Overpayment will be refunded or credited to a future order.
- ✿ Unpaid balance of the order, including freight, **must** be received at minimum 3 weeks before scheduled ship date to avoid delay and/or deposit forfeiture.
- ✿ Orders not secured by a deposit will receive lower priority in the event of crop shortage.
- ✿ No new order will be confirmed if your account is past due.

Credit Policy

- ✿ Established customers with a record of timely payment, may apply for 30 terms.
To request credit terms, customers must complete the credit application available online or from our office.
- ✿ Verifying credit can take up to 2-3 weeks. Please allow sufficient time to complete this process before your order is scheduled to ship. We will establish a reasonable limit based on your credit needs, the references you provide, and your history with us.
- ✿ Credit card payment will incur a 3% surcharge.
- ✿ Past due accounts are subject to a 1.5% per month service charge (18% APR). Any account which becomes substantially overdue will revert to PIA for future orders.
- ✿ A \$25.00 fee will be charged for returned checks.
- ✿ Accounts inactive for 2 years will revert to PIA and will need to fill out a new credit application.

UPS, Trucking & Pick-ups

- ✿ Our primary shipping season is from February 1st - April 15th when plants are most dormant. We recommend bareroot shipments before March 31st. Container grown plants can generally be **picked up** year-round.
- ✿ We will ship the best way after careful review of weather, plant condition, your delivery flexibility, and freight cost. UPS 3 Day is your most secure delivery investment. If you instruct us to ship by UPS Ground, you must accept responsibility for any plant loss due to plants freezing or spoiling in transit.
- ✿ Plants taller than 5 ft. must be shipped by truck or picked up at the nursery. If your order needs to be shipped by your broker or your own truck, please let us know whom to contact.
- ✿ We charge \$150 to arrange trucking.
- ✿ We do not deliver plants.
- ✿ Set your pickup date carefully, please. Give us at least two weeks notice when scheduling a pickup, and try to schedule it for Thursday or Friday. Give us a courtesy call if your plans change, please.
- ✿ If you do not show up on the pick up date you specify we charge a re-stocking fee of \$200 after 2 days.

Canadian Orders

- ✿ Phytosanitary Certificate (PC) and export document fee is \$100. PC expires 14 days after issuance. If you delay or request a different ship date after we get a PC for your order, we may have to get a new PC, for which a \$100 additional fee will apply.
- ✿ Please be certain to include on your import permit that soil/artificial soil mix is permitted; otherwise, you will incur washing fees.
- ✿ All payments must be made in US funds. Due to lengthy bank processing times, we require wire transfer of funds unless other specific provisions are made. We will work with you to ID what best suits you, and still helps us to get paid on time.

Cancellations

- ✿ We assemble orders 1 week before the scheduled ship week. Please give us at least one month advance courtesy notice if you need to reduce/change your order so that we can reallocate plants for other clients who may have them back-ordered.
- ✿ A major order reduction or cancellation after an order has been staged will incur a 20% restocking fee.
- ✿ If we don't hear from you after our final letter, your order will be cancelled and future orders will require a 50% deposit before confirmation.

Closing Comments

Contracting

Have you considered its merits? Although we no longer offer a rebate, contracting your order ahead offers benefits for those whose orders are regularly large. Call us if you need to discuss specifics.

Standing Orders

If there are items you need on an annual basis, we can create a yearly **Standing Order**. We roll them into the next season. That way your order gets priority status.

Visitors

We accept visitors by appointment. You're welcome to visit any time of year. We have several growing locations, and want to be sure you're getting the most out of your time with us, so please schedule your visit. We'll arrange a tour to suit your needs.

Minimum Order

WHOLESALE ONLY. Minimum \$750.

Please order in full bundles (shown alongside prices).

Quality Assurance

Our commitment to you is to grow the best value unusual tree and shrub liners you can find and to deliver them on time. We hope you are especially pleased with your plants' root systems. This should be your immediate impression when you open the box or pick up your order. If it isn't, we want to hear from you as soon as possible so we can address your concerns.

If you take reasonable and prompt care of your plants after delivery and they fail to grow, it's essential you let us know soon. Please contact us within 15 days after delivery. Any discrepancies in counts or shipping damage must be reported within 10 days of delivery to qualify for credit.

Claims: We want to determine the cause so we can make changes to avoid repeating costly mistakes. We'll make every reasonable effort (limited to purchase price) to ensure you are pleased with your purchase and our service. If you feel the plant loss might be on our end or simply want a second opinion, please take some photos and email them in with the quantity and size in question. Bareroot plant claims may not be honored for bare root shipments after March 31st, or for Japanese maples transplanted after that date. Please make every reasonable effort to take delivery before April, and pot them up as soon as possible

Thank You

We so appreciate your continued orders, your trust, and the strong relationship that we've developed with you over many years. Running a nursery, landscape, or garden center enterprise can be an intense experience. Because of YOU we have bright hopes for the future.

If you have further questions or comments, we'd really like to hear from you.

Office & Mailing

4194 - 71st Ave. SE
Salem, OR 97317
(503) 585-9835

Fax: (503) 371-9688

sales@heritageseedlings.com

heritageseedlings.com

Greenhouses

11786 Kingdom Lane SE
(Milepost 19, Hwy. 22 East)
Stayton, OR 97383

Shipping/Pick up

19386 North Santiam Hwy
(Milepost 20, Hwy. 22 East)
Stayton, OR 97383



*I took a walk in the woods and
came out taller than the trees.*

Henry David Thoreau